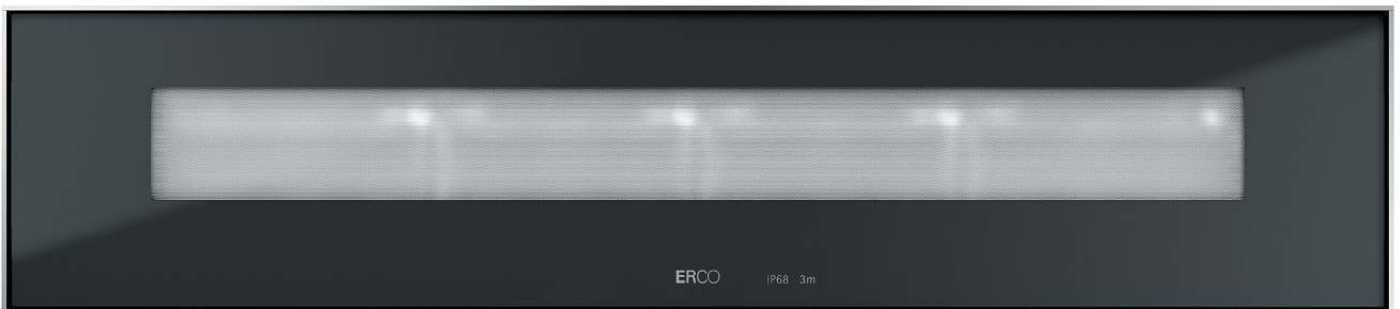


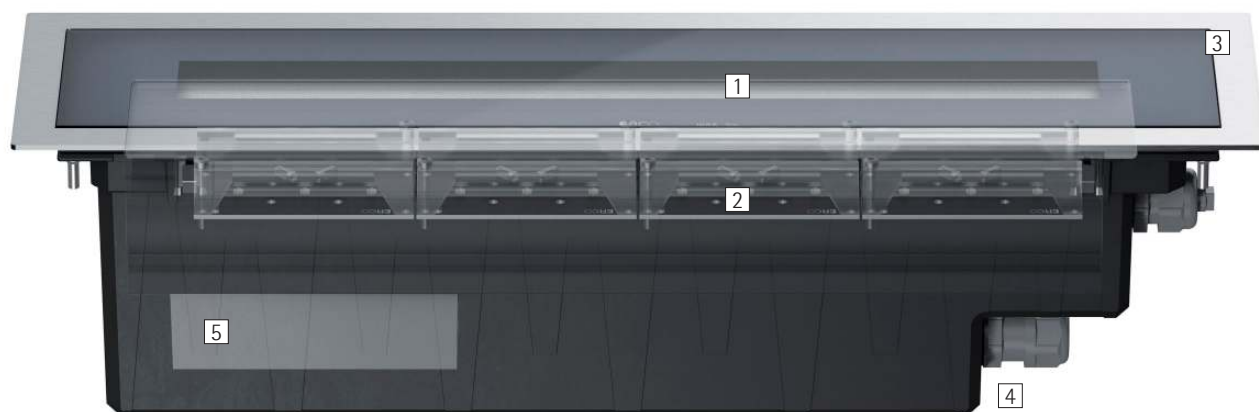
# Site – Emphasizing wall structures for a three-dimensional effect

## **Grazing light wallwashers accentuate surface texture on walls and façades**

Site emphasizes the haptic impression of architectural materials – the grazing light wallwasher makes even the finest structures of wood, concrete and brick and rough surfaces such as natural stone clearly visible. Site creates rich-contrast, structurally appealing effects with light and shadow. The light can be comfortably swivelled in both directions up to an inclination angle of 10 degrees. Thanks to its asymmetric distribution, the graz-

ing light wallwasher generates an extremely uniform beam of light even when the luminaire is positioned up to 12" (30cm) in front of the wall. Site creates both atmospheric light displays and efficient outdoor lighting.





## Structure and characteristics

The features described here are typical of products in this range. Special versions may offer additional or varying features. A comprehensive description of the features of individual products can be found on our website.

### 1 Softec lens

### 2 ERCO LED-module

- High-power LEDs: warm white (3000K) or neutral white (4000K)
- Collimating lens made of optical polymer
- $\pm 10^\circ$  tilt

### 3 Frame

- Covered or flush mounting detail
- Stainless steel
- Safety glass: 3/8" / 10mm, transparent

### 4 Housing

- Polymer, black
- Longitudinally watertight cable AWG14, L 31 1/2" / 800mm
- Installation with separate connection sleeve
- Installation in mounting enclosure: driveable, can be driven over by vehicles with air-filled tyres. Load 4500lb.wt / 20kN
- Hollow floor installation only with overlapping installation detail: Fixing set to be ordered separately

### 5 Control gear

- 0-10V dimmable

### Suitable for wet location (IP68)

Dust-proof. Protected against the results of continuous submersion up to a depth of max. 3m.

### Variants on request

- High-power LEDs: 3000K CRI 97 or 2700K, 3500K, 4000K with CRI 92
  - Frame: V4A stainless steel
  - Anti-slip safety glass
- Please contact your ERCO consultant.



Design and application:  
[www.erco.com/site](http://www.erco.com/site)

# Site In-ground luminaires



**Very high visual comfort**  
 ERCO has developed luminaires with special housing designs and high-quality optical components specifically for demanding visual tasks to provide enhanced visual comfort.



**Grazing light wallwashing**  
 Grazing light wallwashers need to be positioned close to the wall for ideal effects.



**Large luminaire spacing**  
 ERCO's efficient photometrics enable selected luminaires to be spaced particularly far apart, thereby minimizing the number of luminaires required.

## Special characteristics



Excellent visual comfort



Grazing light wallwasher



Large luminaire spacing possible



ERCO high-power LEDs



Different light colors



Excellent thermal management



EMC-optimized



Pivotable by  $\pm 10^\circ$



Flush or covered mounting detail



Wet location



0-10V dimmable

## Site In-ground luminaires – Luminaire arrangement

### Grazing light wallwashers Grazing light

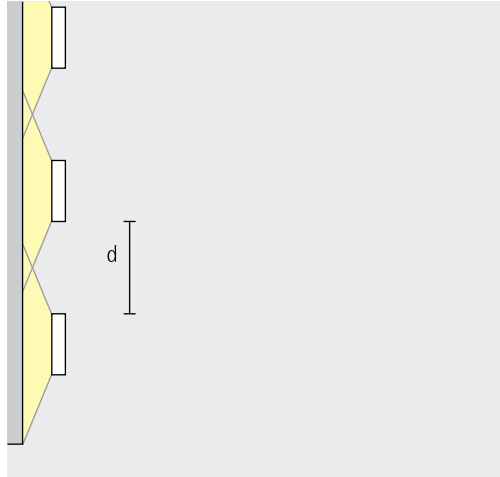


### Wallwashing

To allow surface textures to come to the foreground of attention, the distance (a) of Site grazing light wallwashers from the wall should be approx. 30cm.

Arrangement:  $a = 30\text{cm}$

Application: surfaces with a three-dimensional texture, e.g. natural stone walls.



For good longitudinal uniformity, the spacing (d) of two Site grazing light wallwashers may be up to 1m.

Arrangement:  $d \leq 1\text{m}$

The optimal wall offset and luminaire spacing for each product are indicated in the wallwasher tables in the catalogue and the product data sheets.

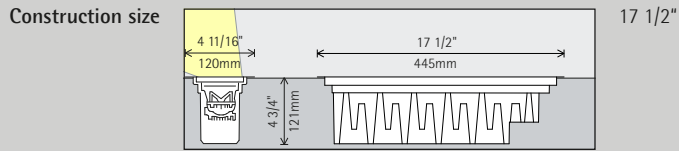


Ursula Tower, Günzburg. Lighting design and E-planning: Conplaning GmbH, Ulm. Photography: Dirk Vogel, Dortmund.

Gyeongbokgung  
Palace, Seoul.  
Lighting design:  
bitzro & partners,  
Seoul. Photogra-  
phy: Jackie Chan,  
Sydney.



# Site In-ground luminaires



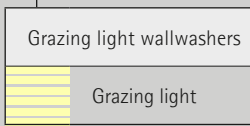
LED module  
Maximum value  
at 4000K CRI 82

24W/3300lm

Light color

	2700K CRI 92 *		3500K CRI 92 *
	3000K CRI 92		4000K CRI 82
	3000K CRI 97 *		4000K CRI 92 *

Light distribution

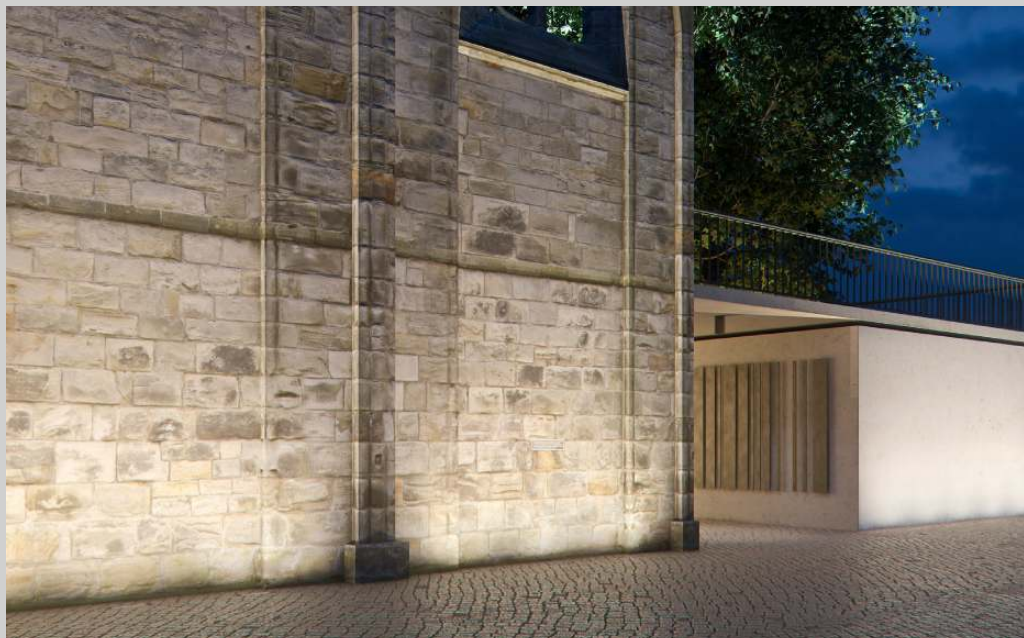


Control

0-10V 0-10V

Accessories

	Connection sleeve		Mounting kit
	Recessed housing		



\* available on request

Article numbers and planning data:  
[www.erco.com/015411-us](http://www.erco.com/015411-us)

Design and application:  
[www.erco.com/site](http://www.erco.com/site)



