

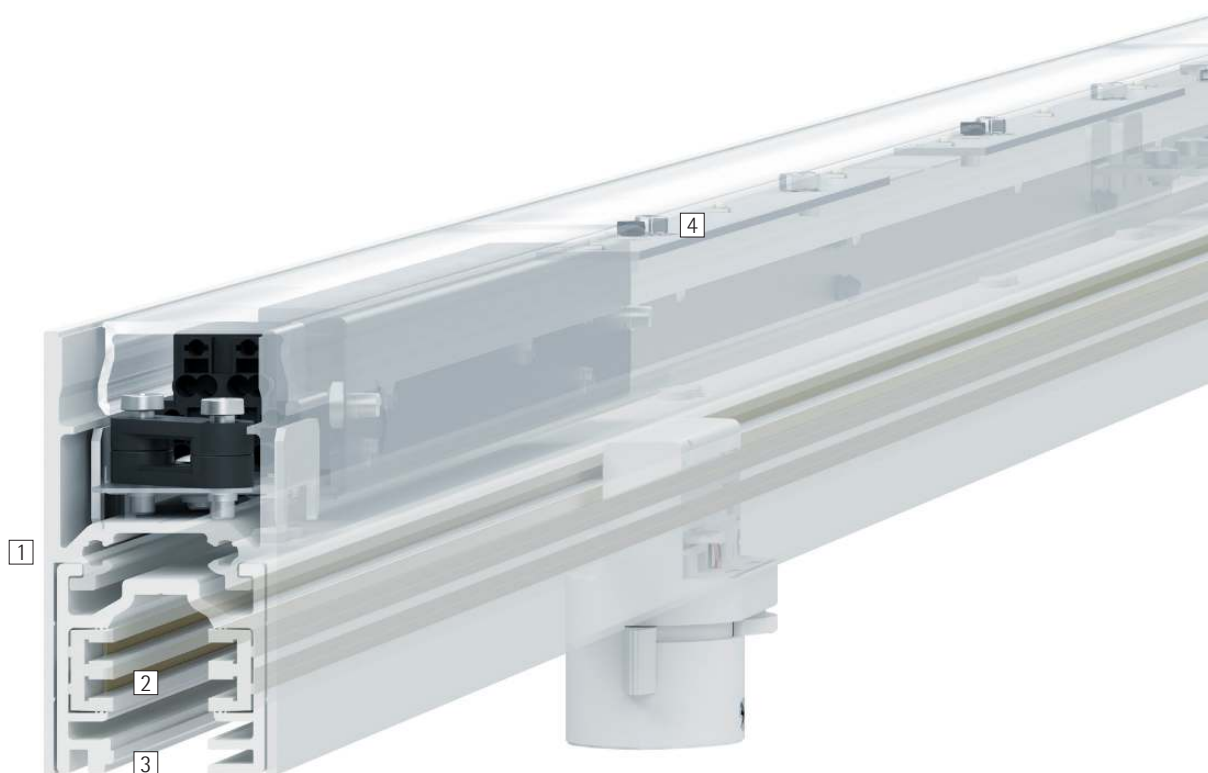


ERCO Hi-trac track and light structures – Carrying it off

Hi-trac combines the flexible options of a track with the visual comfort of indirect lighting

The Hi-trac light structure is a heavy-duty system and allows very wide spacing between the suspensions. Hi-trac is an aluminum extrusion and available with integrated ERCO track in two versions: either with an empty upper compartment for cables or as an indirect luminaire.

Hi-trac enables the combination of indirect lighting with accent light from the track.



Structure and characteristics

The features described here are typical of products in this range. Special versions may offer additional or varying features. A comprehensive description of the features of individual products can be found on our website.

1 Panel profile

- White (RAL9002) or silver
- Aluminum, powder-coated
- Track and panel profile to be assembled on site

2 Contact (lower part)

- 4 isolated copper conductors
- 2 separately switchable circuits of 20A each

3 Earth conductor

4 Fixture with LED module (on upper side)

- High-power LEDs: warm white (2700K or 3000K) or neutral white (3500K or 4000K)
- Cover: diffuser, polymer, textured
- Covered control gear: trailing edge dimmable

or

Empty profile (upper side of track)

- For accommodating through-wiring or cover profiles

Variants on request

- Housing: 10,000 further colors
- Please contact your ERCO consultant.



Design and application:
www.erco.com/hi-trac

ERCO Hi-trac track and light structures



Focus on mounting and accessories

ERCO's nuanced and diversified product range has stood the test even in special situations – from planning complex light structures to high load requirements.

Special characteristics



Accessory for mounting variants



ERCO high-power LEDs



Different light colors



Excellent thermal management



EMC-optimized



Various housing colors



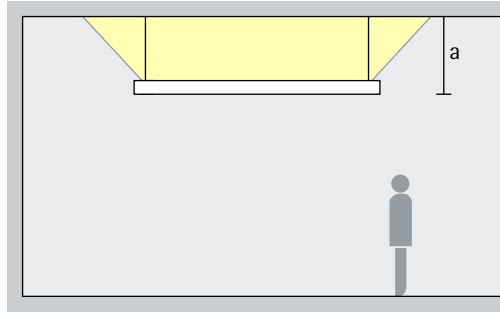
Various construction sizes



Trailing edge dimmable

ERCO Hi-trac track and light structures – Luminaire arrangement

Luminaires, indirect



General lighting

The LED module, mounted flush into the Hi-trac track from above, projects the light onto the ceiling, emphasizing the dimensions of high rooms. The ideal distance (a) of the light structure to the ceiling is 2ft.

Arrangement: $a = 2\text{ft}$



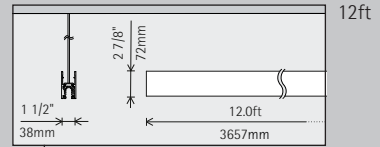
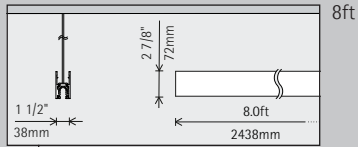
Heidelberg City Hall. Planning: Heidelberg City Council, Facility Management. Photography: Dirk Vogel, Altena.

Heidelberg City
Hall. Planning:
Heidelberg City
Council, Facility
Management.
Photography: Dirk
Vogel, Altena.






Hi-trac track and light structures

Construction size

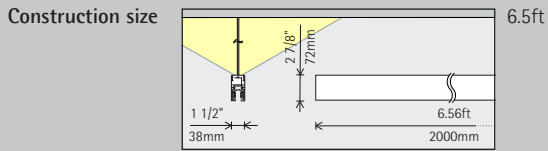


Color (housing)

	White
	Silver
	10,000 colors *

Accessories

	Connectors		Cover profile
	Suspension equipment		



LED module
Maximum value
at 4000K CRI 82

12W/1800lm

**Light color
(indirect)**

	2700K CRI 92		3500K CRI 92
	3000K CRI 92		4000K CRI 82
	3000K CRI 97		4000K CRI 92

Control

Trailing edge dimmable

Color (housing)

	White
	Silver
	10,000 colors *

* available on request

Article numbers and planning data:
www.erco.com/012190-us

Design and application:
www.erco.com/hi-trac



