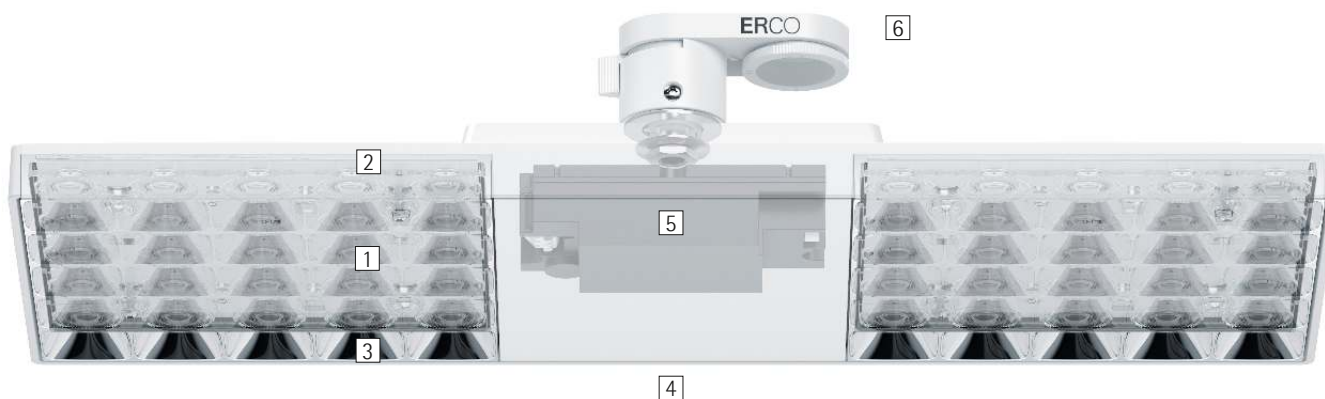


Jilly – The versatile light for modern work

Highly efficient and standard-compliant office workplace lighting – with track as a flexible basis.

In keeping with modern, dynamic working environments in which office layouts are constantly changing and adapting, Jilly luminaires for track achieve the efficient and standard-compliant lighting of workplaces. The especially flat housing and a striking anti-dazzle louvre characterise the elegant appearance. Jilly's lighting technology combines a highly efficient lens system with an anti-dazzle louvre for visual comfort

and luminous efficacy at the same high level. The wattage and light distribution enable wide luminaire spacing for economical lighting concepts that comply to standards. Jilly can be optimally aligned by mounting on track – always meeting the requirements of the architecture and the arrangement of the workstations.



Structure and characteristics

The features described here are typical of products in this range. Special versions may offer additional or varying features. A comprehensive description of the features of individual products can be found on our website.

1 ERCO lens system

- Made of optical polymer
- Light distributions: extra wide flood or oval wide flood

2 ERCO LED-module

- Mid-power LEDs: warm white (2700K or 3000K) or neutral white (3500K or 4000K)

3 Louvre

- Polymer, black lacquered or aluminium vaporised, silver, mirror-finish

4 Housing

- White (RAL9002), black or silver
- Polymer, coated
- Rotatable through 360° on adapter

5 Control gear

- Switchable, phase dimmable+On-board Dim, DALI dimmable or Casambi Bluetooth
- Phase dimmable + On-board Dim version: Dimming with external dimmers (trailing edge) possible and rotary control for brightness control on the luminaire

6 ERCO 3-circuit adapter or ERCO DALI adapter

Variants on request

- Anti-glare louvre: gold matt, silver matt, champagne matt or copper matt-coated and other colours
 - Housing: 10,000 further colours
- Please contact your ERCO consultant.



Design and application:
www.erco.com/jilly-t



Louvres for efficient visual comfort

A louvre is designed to restrict the view into the luminaire, achieving efficient visual comfort with an emission angle of 90°. An anti-glare louvre available in black or silver enables the luminaire to blend with the material and colour of the ceiling.



Suitable for office workstations

ERCO develops luminaires with the specifications of good glare control and high visual comfort. UGR values are used as support for purely norm-referenced lighting. With downlights though this should not be carried out using 'blanket' values, but should be implemented according to the individual arrangement of luminaires in the room.



Low construction height

Luminaires with a flat housing have an elegant appearance and direct the focus on the light. Flat luminaires are especially advantageous for low room heights.

Special characteristics

- Improved visual comfort
- For office workstation lighting from UGR 13.1
- Low construction height

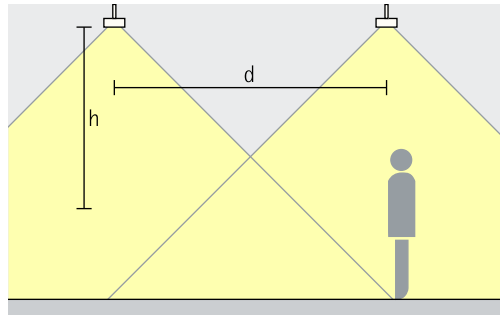
- ERCO mid-power LEDs
- Efficient lens system
- Different light colours

- Excellent thermal management
- EMC-optimised
- Various housing colours
- Easy installation

- Switchable
- Phase dimmable + On-board Dim
- DALI dimmable
- Casambi Bluetooth

Jilly for track 220-240V – Luminaire arrangement

Downlights Extra wide flood



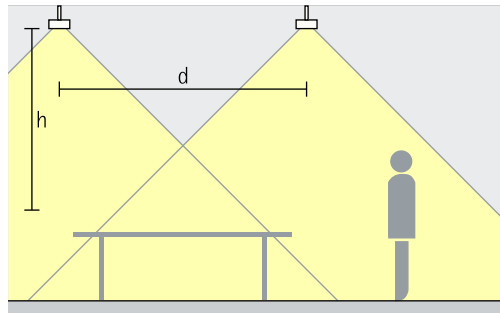
General lighting

As an approximate luminaire distance (d) between two luminaires, the height (h) of the luminaire above the working plane can be used. The intersecting beams produce excellent uniformity. The recommended offset from the wall is half the luminaire spacing.

Rough guide: $d \leq 1.5 \times h$

Application area: as ambient lighting in the room and as flexible illumination of office workplaces.

Downlights oval wide flood Oval wide flood

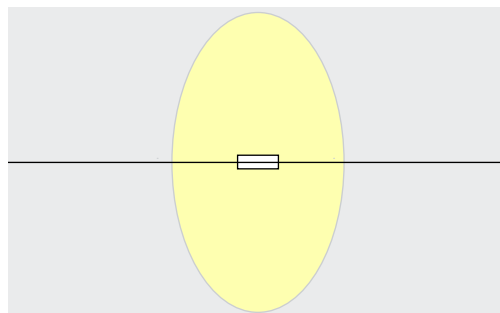


General lighting

To achieve a high level of uniformity and good facial recognition when illuminating office workstations, up to 1.5 times the height (h) of the luminaire above the working plane can be used for the spacing (d) between two luminaires. The intersecting beams produce excellent uniformity. The recommended offset from the wall is half the luminaire spacing.

Rough guide: $d \leq 1.5 \times h$

Application area: flexible lighting for office workplaces.



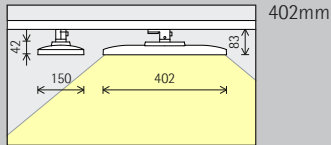
Jilly, with oval wide flood distribution of light transverse to the luminaire, orients itself to luminaire alignment as highly proven for office applications.

Fabege AB -
WAW Luma,
Stockholm. Archi-
tecture: ABREU
Design Studio;
EgnellAllard
Inredningsarkitek-
tur, Stockholm.
Lighting design:
ABREU Design
Studio. Electrical
engineering:
Stockholms
Eltjänst Lun-
dén AB; Elbolaget
LMJ AB; Lundek
Elkonsult AB;
Elarkitektur AB.
Photography:
Gavriil Papadiotis,
London.



Jilly for track 220-240V

Construction size



LED module Maximum value at 4000K CRI 82

15W/2700lm

Light colour

	2700K CRI 92		3500K CRI 92
	3000K CRI 82		4000K CRI 82
	3000K CRI 92		4000K CRI 92

Light distribution

Downlights	Downlights oval wide flood
Extra wide flood	Oval wide flood

Control

Switchable	DALI
Phase dimmable + On-board Dim	Casambi Bluetooth

Colour (housing/louvre)

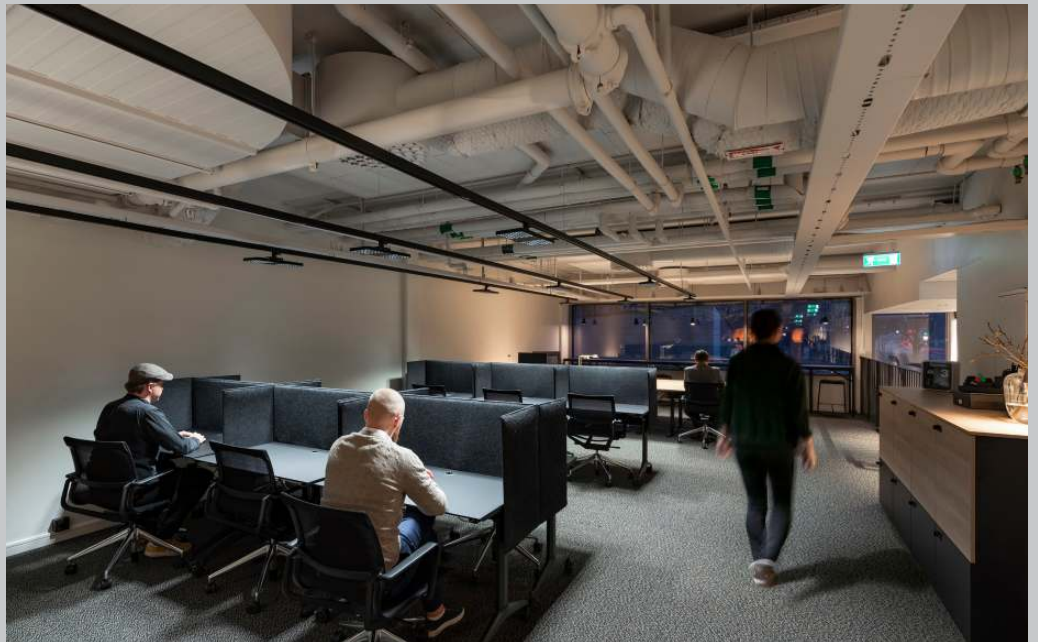
	White/Silver		White/Black		10,000 colours * / Silver
	Black/Silver		Black/Black		10,000 colours * / Black
	Silver/Silver		Silver/Black		

* available on request

Article numbers and planning data:
www.erco.com/017657

Design and application:
www.erco.com/jilly-t





Fabege AB - WAW
Arena Staden,
Stockholm. Archi-
tecture: ABREU
Design Studio;
EgnellAllard Inred-
ningsarkitek-
tur, Stockholm.
Lighting design:
ABREU Design
Studio. Electric-
al engineering:
Stockholms Elt-
jänst Lundén AB;
Elbolaget LMJ AB;
Lundek Elkonsult
AB; Elarkitektur
AB. Photography:
Gavriil Papadiotis,
London.

