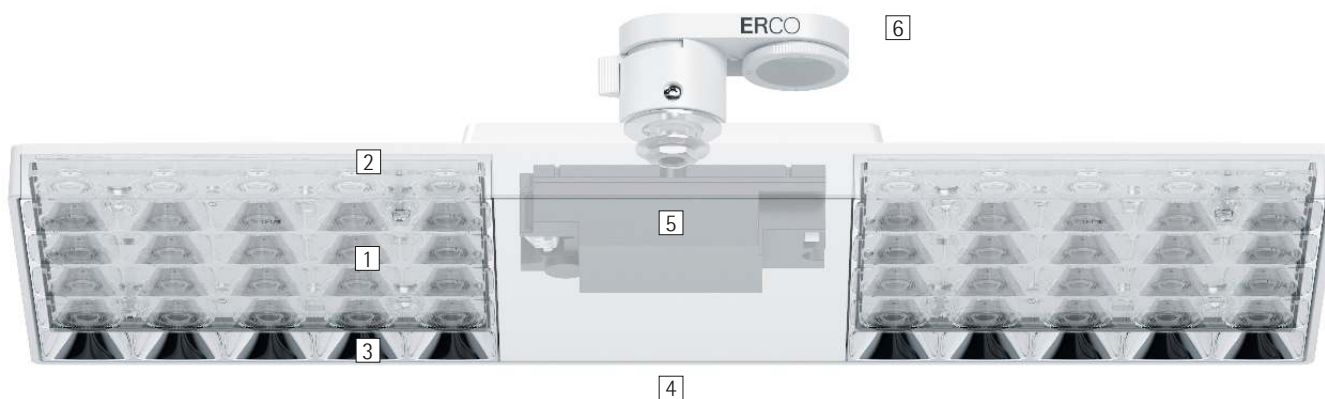


Jilly – The versatile light for modern work

Highly efficient and standard-compliant office workplace lighting – with track as a flexible basis.

In keeping with modern, dynamic working environments in which office layouts are constantly changing and adapting, Jilly luminaires for track achieve the efficient and standard-compliant lighting of workplaces. The especially flat housing and a striking anti-glare louvre characterize the elegant appearance. Jilly's lighting technology combines a highly efficient lens system with an anti-glare louvre for visual comfort and luminous

efficacy at the same high level. The wattage and light distribution enable wide luminaire spacing for economical lighting concepts that comply to standards. Jilly can be optimally aligned by mounting on track adapters – always according to the requirements of the architecture and the arrangement of the workstations.



Structure and characteristics

The features described here are typical of products in this range. Special versions may offer additional or varying features. A comprehensive description of the features of individual products can be found on our website.

1 ERCO lens system

- Made of optical polymer
- Light distributions: extra wide flood or oval wide flood

2 ERCO LED module

- Mid-power LEDs: warm white (2700K or 3000K) or neutral white (3500K or 4000K)

3 Louvre

- Polymer, black lacquered or aluminum vaporized, silver, specular

4 Housing

- White (RAL9002), black or silver
- Polymer, coated
- Rotatable through 360° on adapter

5 Control gear

- Trailing edge dimmable+On-board Dim
- Dimming with external dimmers (trailing edge) possible and rotary control for brightness control on the luminaire

6 ERCO turning adapter for 2-circuit track

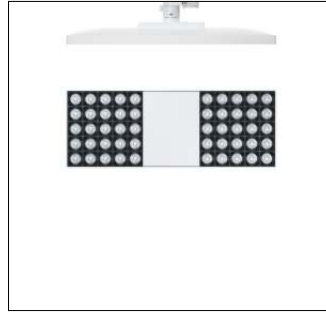
Variants on request

- Anti-glare louvre: gold matt, silver matt, champagne matt or copper matt-coated and other colors
 - Housing: 10,000 further colors
- Please contact your ERCO consultant.



Design and application:
www.erco.com/jilly-t

Jilly for 2-circuit track



Louvres for efficient visual comfort

A louvre is designed to restrict the view into the luminaire, achieving efficient visual comfort with an emission angle of 90°. An anti-glare louvre available in black or silver enables the luminaire to blend with the material and color of the ceiling.

Low construction height

Luminaires with a flat housing have an elegant appearance and direct the focus on the light. Flat luminaires are especially advantageous for low room heights.

Special characteristics



Improved visual comfort



Low construction height



ERCO mid-power LEDs



Efficient lens system



Different light distributions



Excellent thermal management



EMC-optimized



Various housing colors



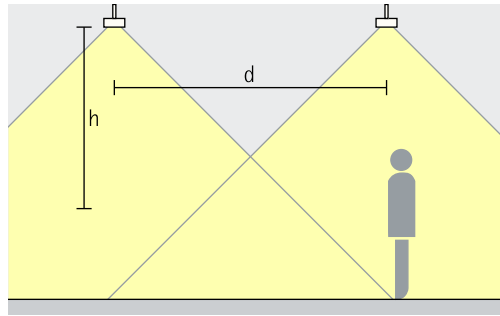
Easy installation



Trailing edge dimmable + On-board Dim

Jilly for 2-circuit track – Luminaire arrangement

Downlights Extra wide flood



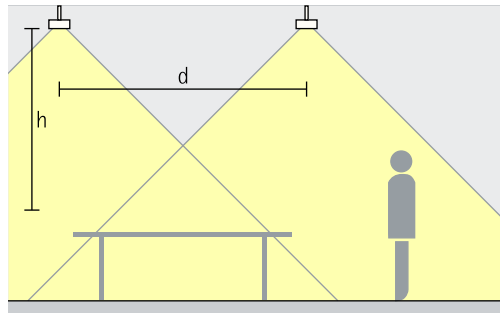
General lighting

As an approximate luminaire distance (d) between two luminaires, the height (h) of the luminaire above the working plane can be used. The intersecting beams produce excellent uniformity. The recommended offset from the wall is half the luminaire spacing.

Rough guide: $d \leq 1.5 \times h$

Application area: as ambient lighting in the room and as flexible illumination of office workplaces.

Downlights oval wide flood Oval wide flood

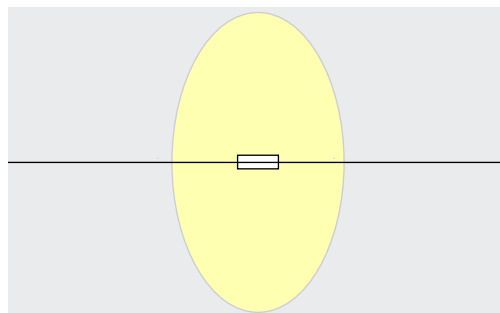


General lighting

To achieve a high level of uniformity and good facial recognition when illuminating office workstations, up to 1.5 times the height (h) of the luminaire above the working plane can be used for the spacing (d) between two luminaires. The intersecting beams produce excellent uniformity. The recommended offset from the wall is half the luminaire spacing.

Rough guide: $d \leq 1.5 \times h$

Application area: flexible lighting for office workplaces.



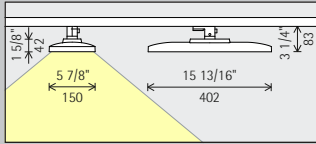
Jilly, with oval wide flood distribution of light transverse to the luminaire, orients itself to luminaire alignment as highly proven for office applications.

Fabege AB -
WAW Luma,
Stockholm. Archi-
tecture: ABREU
Design Studio;
EgnellAllard
Inredningsarkitek-
tur, Stockholm.
Lighting design:
ABREU Design
Studio. Electrical
engineering:
Stockholms
Eltjänst Lundén
AB; Elbolaget
LMJ AB; Lundek
Elkonsult AB;
Elarkitektur AB.
Photography:
Gavriil Papadiotis,
London.



Jilly for 2-circuit track

Construction size 15 13/16"



LED module
Maximum value
at 4000K CRI 82

10W/1830lm

Light color

	2700K CRI 92		3500K CRI 92
	3000K CRI 82		4000K CRI 82
	3000K CRI 92		4000K CRI 92

Light distribu-
tion

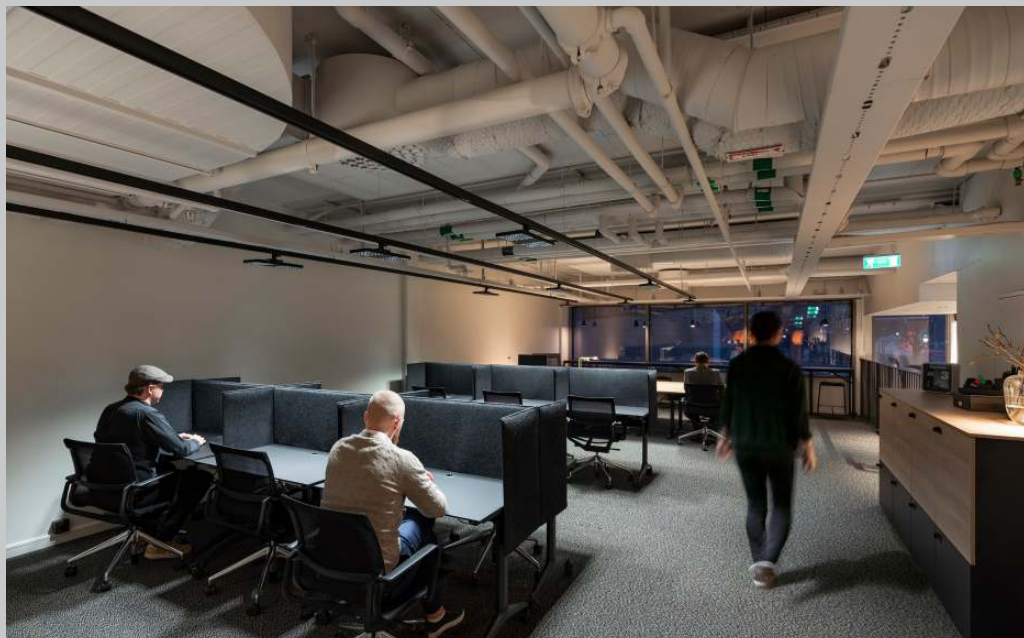
Downlights	Downlights oval wide flood
Extra wide flood	Oval wide flood

Control

Trailing edge
dimmable +
On-board Dim

Color
(housing/louvre)

	White/Silver		White/Black		10,000 colors */ Silver
	Black/Silver		Black/Black		10,000 colors */ Black
	Silver/Silver		Silver/Black		



Fabege AB - WAW
Arena Staden,
Stockholm. Archi-
tecture: ABREU
Design Studio;
EgnellAllard Inred-
ningsarkitek-
tur, Stockholm.
Lighting design:
ABREU Design
Studio. Electri-
cal engineering:
Stockholms Elt-
jänst Lundén AB;
Elbolaget LMJ AB;
Lundek Elkonsult
AB; Elarkitektur
AB. Photography:
Gavriil Papadiotis,
London.

* available on request

Article numbers and planning data:
www.erco.com/017657-us

Design and application:
www.erco.com/jilly-t



