

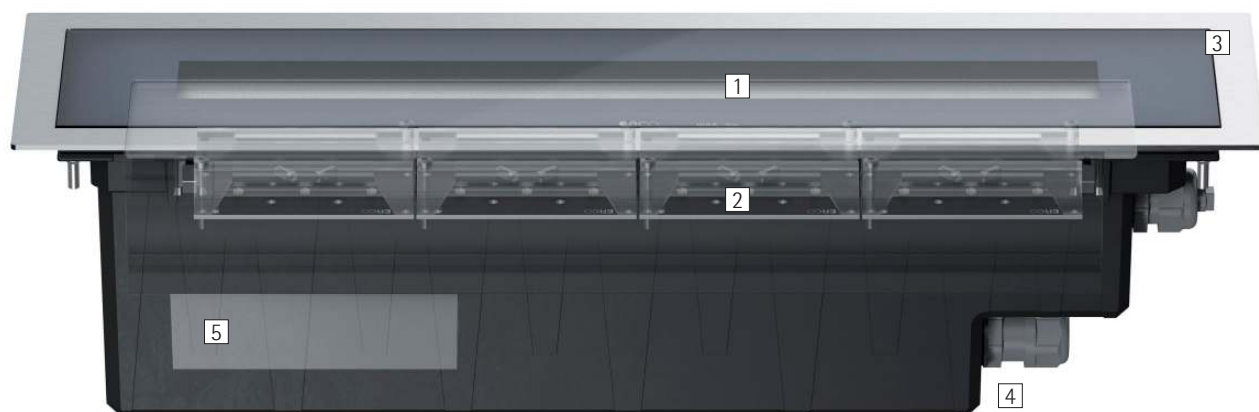
# Site – Emphasising wall structures for a three-dimensional effect

## **Grazing light wallwashers accentuate surface texture on walls and façades**

Site emphasises the tactile qualities of architectural materials – the grazing light wallwasher makes even the finest structures of wood, concrete and brick and rough surfaces such as natural stone clearly visible. Site creates high-contrast, structurally appealing effects with light and shadow. The light can be comfortably tilted in both directions up to an inclination angle of 10 degrees. Thanks to its asymmetric distribution, the

grazing light wallwasher generates an extremely uniform beam even when the luminaire is positioned up to 30cm in front of the wall. Site creates both atmospheric light displays and efficient outdoor lighting.





## Structure and characteristics

The features described here are typical of products in this range. Special versions may offer additional or varying features. A comprehensive description of the features of individual products can be found on our website.

### 1 Softec lens

### 2 ERCO LED-module

- High-power LED: warm white (3000K) or neutral white (4000K)
- Collimating lens made of optical polymer
- $\pm 10^\circ$  tilt

### 3 Frame

- Covered or flush mounting detail
- Stainless steel
- Safety glass: 10mm, transparent

### 4 Housing

- Polymer, black
- Connection cable 3x1.5mm<sup>2</sup> or 5x1.5mm<sup>2</sup>
- Installation with separate connection sleeve
- Installation in mounting enclosure: driveable, can be driven over by vehicles with air-filled tyres. Load 20kN
- Hollow floor installation only with overlapping installation detail: Fixing set to be ordered separately

### 5 Control gear

- Switchable, phase dimmable or DALI dimmable
- Phase dimmable version: Dimming with external dimmers possible (trailing edge)

### Protection mode IP68

Protection against the ingress of dust, protection against the consequences of continuous immersion in water to a depth of max. 3m.

### Variants on request

- High-power LEDs: 3000K CRI 97 or 2700K, 3500K, 4000K with CRI 92
  - Frame: V4A stainless steel
  - Anti-slip safety glass
- Please contact your ERCO consultant.



Design and application:  
[www.erco.com/site](http://www.erco.com/site)

## Site In-ground luminaires



**Very high visual comfort**  
 ERCO has developed luminaires with special housing designs and high quality optical components specifically for demanding visual tasks to provide enhanced visual comfort.



**Grazing light wallwashing**  
 Grazing light wallwashers need to be positioned close to the wall for ideal effects.



**Large luminaire spacing**  
 ERCO's efficient photometrics enable selected luminaires to be spaced particularly far apart, thereby minimising the number of luminaires required.

### Special characteristics



Excellent visual comfort



Grazing light wallwasher



Large luminaire spacing possible



ERCO high-power LEDs



Different light colours



Excellent thermal management



EMC-optimised



Pivotable by  $\pm 10^\circ$



Flush or covered mounting detail



Protection mode IP68



Safety class II



Switchable



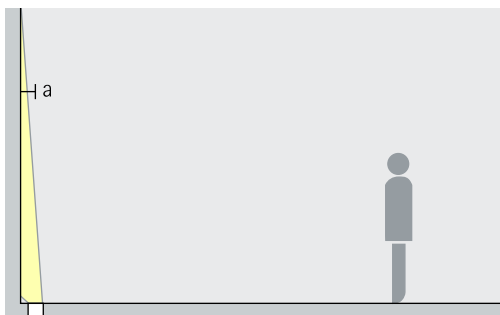
Phase dimmable



DALI dimmable

## Site In-ground luminaires – Luminaire arrangement

### Grazing light wallwashers

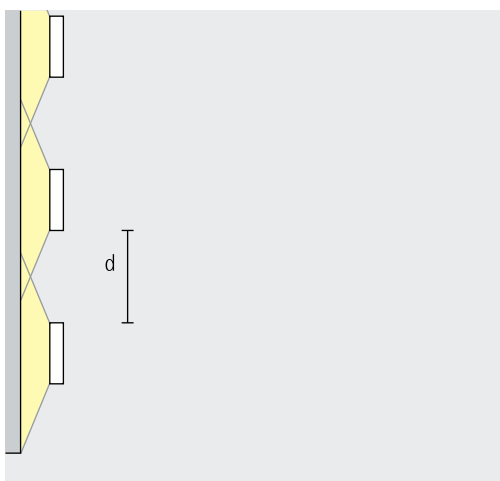


### Wallwashing

To allow surface textures to come to the foreground of attention, the distance (a) of Site grazing light wallwashers from the wall should be approx. 20cm.

Arrangement:  $a = 20\text{cm}$

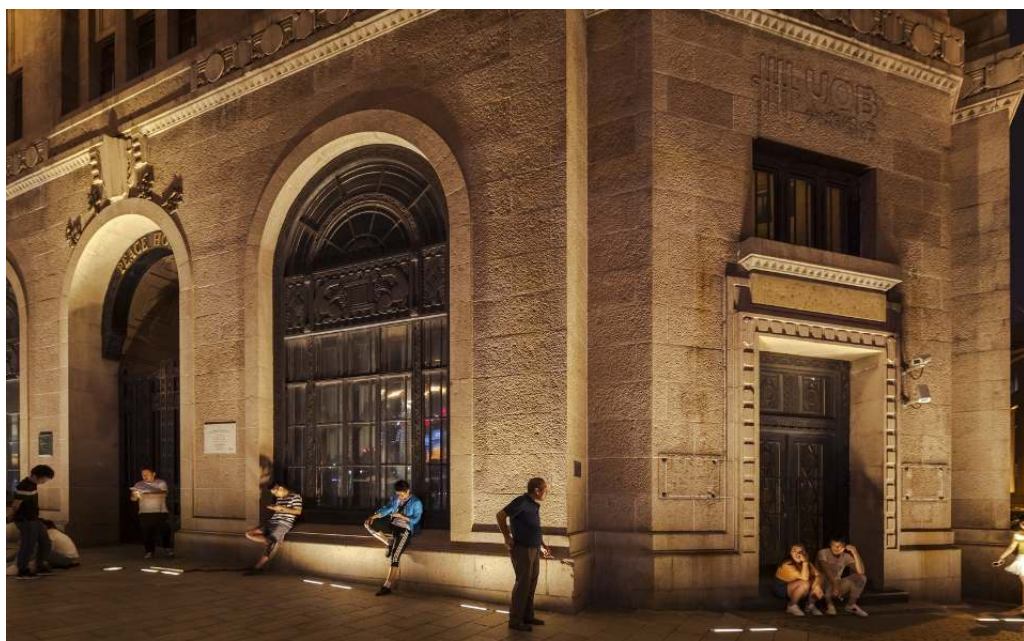
Application: surfaces with a three-dimensional texture, e.g. natural stone walls.



For good longitudinal uniformity, the spacing (d) of two Site grazing light wallwashers may be up to 1m.

Arrangement:  $d \leq 1\text{m}$

The optimal wall offset and luminaire spacing for each product are indicated in the wallwasher tables in the catalogue and the product data sheets.

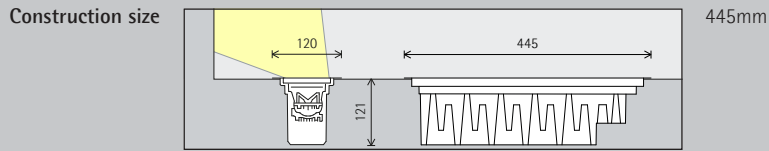


The Bund waterfront, Shanghai.  
Lighting design:  
Huangpu District Lighting  
Landscape Management Office.  
Photography:  
Jackie Chan,  
Sydney.

Sollentuna sports hall, Sollentuna. Architecture: Bleck arkitekter AB. Lighting design: Sweco. Photography: Johan Elm, Stockholm.



# Site In-ground luminaires

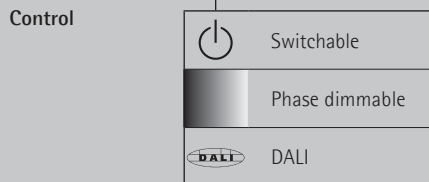
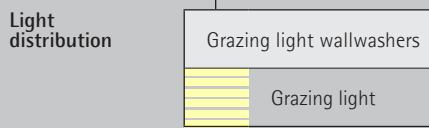


**LED module**  
Maximum value at 4000K CRI 82

24W/3300lm

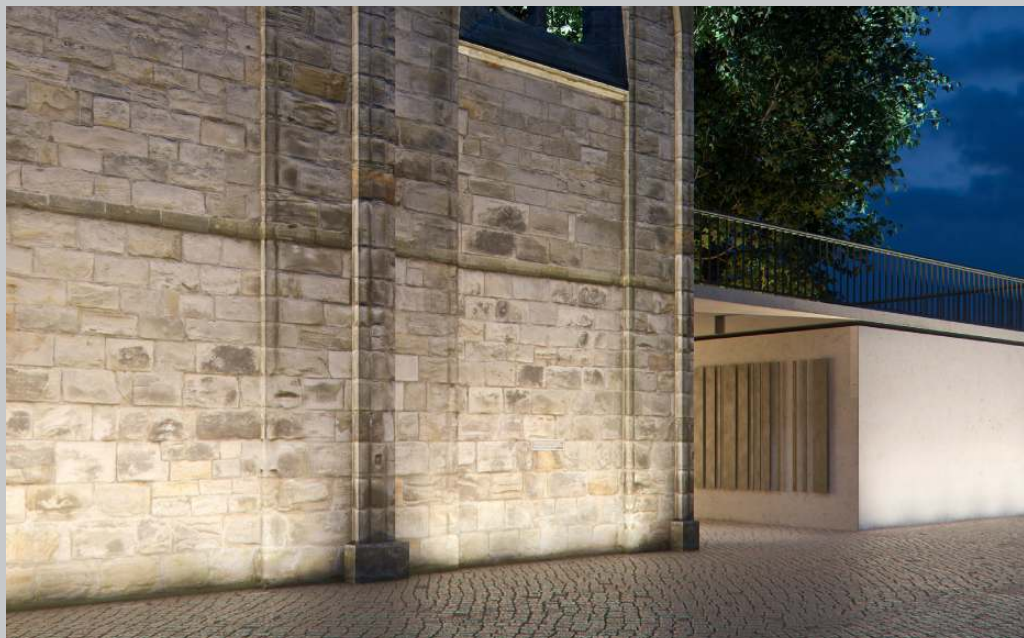
**Light colour**

	2700K CRI 92 *		3500K CRI 92 *
	3000K CRI 92		4000K CRI 82
	3000K CRI 97 *		4000K CRI 92 *



**Accessories**

	Connection sleeve		Mounting enclosure
	Branching sleeve		Mounting kit



\* available on request

Article numbers and planning data:  
[www.erco.com/015411](http://www.erco.com/015411)

Design and application:  
[www.erco.com/site](http://www.erco.com/site)





