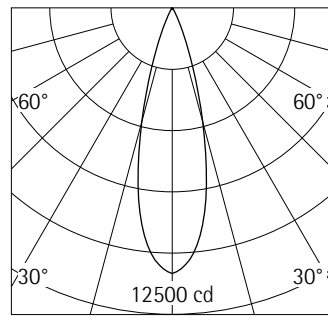


**71682.000** White (RAL9002)  
 LED module: 24W 3300lm 4000K  
 neutral white  
 DALI-2  
 Version 4  
 Spherolit lens, flood

**Product description**  
 Housing and bracket: cast aluminium, powder-coated. 0°-90° tilt. Bracket on DALI adapter rotatable through 360°. Internal wiring. ERCO DALI control gear. DALI adapter for ERCO DALI 220-240V track: polymer, white. LED module: high-power LEDs on metal-core PCB. Collimating lens made of optical polymer. Weight 0.94kg



h(m)	E(lx)	D(m)
		28°
1	10837	0.50
2	2709	1.00
3	1204	1.50
4	677	1.99
5	433	2.49

**Technical data**

Luminous flux of the luminaire	2805lm
Connected load	29.0W
Luminaire efficacy	97lm/W
Colour deviation	1.5 SDCM
Colour rendition index	CRI 82
Lumen maintenance (LED manufacturer specifications)	L90/B10 ≤50000h L90 ≤100000h
LED failure rate	0.1% ≤50000h
Dimming range	0.1%-100%
Dimming method	CCR
LMF	E
Standby power per control gear	0.4W
Luminaires per circuit breaker B16	28



**Mounting**  
 ERCO DALI track  
 Hi-trac DALI track  
 DALI singlet

For your regional contact in the ERCO  
 Sales network click here  
[www.erco.com/contact](http://www.erco.com/contact)

Technical Region: 220-240V 50/60Hz  
 We reserve the right to make technical  
 and design changes.  
 Edition: 16.11.2022  
 Current version under  
[www.erco.com/71682.000](http://www.erco.com/71682.000)

## Planning data

Cleaning (a)	1				2				3			
	P	C	N	D	P	C	N	D	P	C	N	D
LMF	0.96	0.94	0.90	0.86	0.93	0.91	0.86	0.81	0.92	0.90	0.84	0.79
RSMF	0.99	0.97	0.95	0.92	0.98	0.97	0.95	0.92	0.98	0.97	0.95	0.92

Hours of operation (h)	1000	5000	10000	20000	30000	40000	50000
LLMF	1.00	0.99	0.98	0.96	0.94	0.92	0.90
LSF	1	1	1	1	1	1	1

MF	LMFxRSMFxLLMFxLSF
MF	Maintenance Factor
LMF	Luminaire Maintenance Factor
RSMF	Room Surface Maintenance Factor
LLMF	Lamp Lumens Maintenance Factor
LSF	Lamp Survival Factor
P	Room pure
C	Room clean
N	Room normal
D	Room dirty

### Data according to regulations

2019/2020/EU supplemented by 2021/341/EU and 2019/2015/EU supplemented by 2021/340/EU Energy Consumption Labelling Ordinance

This product contains a light source of efficiency class D

Due to thermal and photometric properties as well as to protect electronic components from ESD (electrostatic discharge) the light source cannot be changed by the customer.

ID EPREL: 696743

Model identifier: 3000054478

Download data sheets for control gear and disassembly instructions at [www.erco.com/slr](http://www.erco.com/slr)

### Technical data in accordance with international norms and standards

IEC 60598	Luminaires – Part 1+2: general requirements, specific requirements and tests
IEC 62031	LED modules for general lighting – safety requirements
IEC 62471	Photobiological safety of lamps and lamp systems
EN 13032-4	Light and lighting – measurement and representation of photometric data
CIE 13	Method of measuring and specifying colour rendering properties of light sources

All technical data is subject to industry-standard tolerances.

Also see [www.erco.com/erco-led](http://www.erco.com/erco-led)

For explanations of the symbols and abbreviations used and other general information, see [www.erco.com/symbols](http://www.erco.com/symbols)

Accessories



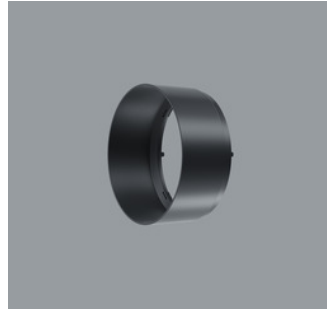
**70863.000**  
Spherolit lens spot  
made of optical polymer.  
Replacement without tools.



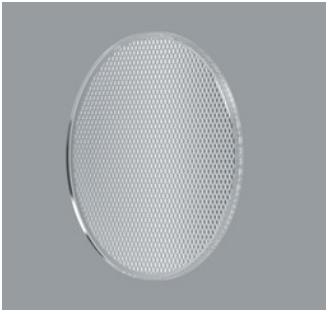
**70684.000**  
Snoot  
Polymer.  
White



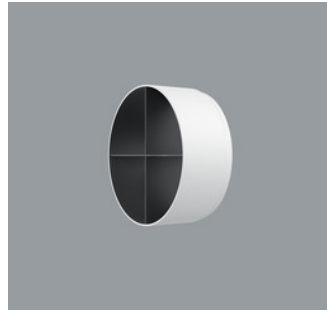
**70848.000**  
Spherolit lens flood  
made of optical polymer.  
Replacement without tools.



**70635.000**  
Snoot  
Polymer.  
Black



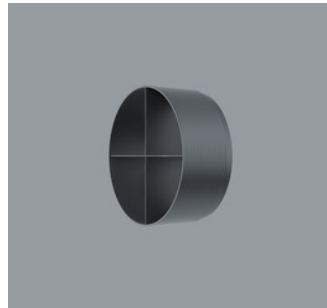
**70849.000**  
Spherolit lens wide flood  
made of optical polymer.  
Replacement without tools.



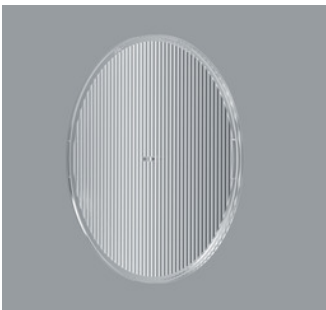
**78037.000**  
Cross-baffle  
Aluminium, coated black, polymer  
outer.  
White



**73998.000**  
Spherolit lens extra wide flood  
made of optical polymer.  
Replacement without tools.



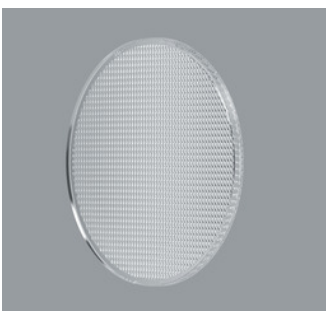
**78041.000**  
Cross-baffle  
Aluminium, coated black, polymer  
outer.  
Black



**70864.000**  
Spherolit lens oval flood  
made of optical polymer.  
Replacement without tools.



**78033.000**  
Honeycomb anti-glare screen  
Black



**70865.000**  
Spherolit lens wallwash  
made of optical polymer.  
Replacement without tools.