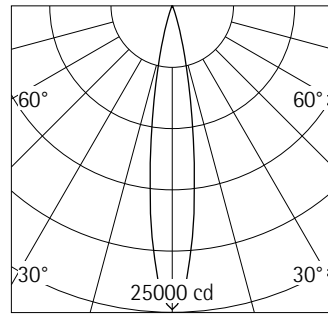


71701.000 White (RAL9002)
 LED module: 24W 3300lm 4000K
 neutral white
 Phase dimmable+ On-board Dim
 Version 4
 Spherolit lens, spot

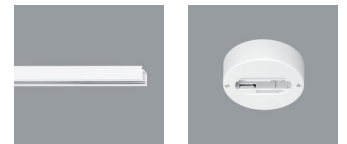
Product description
 Housing and bracket: cast aluminium, powder-coated. 0°-90° tilt. Bracket on 3-circuit adapter rotatable through 360°. Internal wiring. ERCO control gear, dimmable. Rotary control for brightness regulation. 3-phase adapter for ERCO 220-240V track: polymer, white. LED module: high-power LEDs on metal-core PCB. Collimating lens made of optical polymer. Dimming with external dimmers possible (trailing edge). Weight 0.94kg



| h(m) | E(lx) | D(m) |
|------|-------|------|
| | | 16° |
| 1 | 24783 | 0.28 |
| 2 | 6196 | 0.56 |
| 3 | 2754 | 0.84 |
| 4 | 1549 | 1.12 |
| 5 | 991 | 1.41 |

Technical data

| | |
|---|---------------------------------|
| Luminous flux of the luminaire | 2814lm |
| Connected load | 29.0W |
| Luminaire efficacy | 97lm/W |
| Colour deviation | 1.5 SDCM |
| Colour rendition index | CRI 82 |
| Lumen maintenance (LED manufacturer specifications) | L90/B10 ≤50000h L90 ≤100000h |
| LED failure rate | 0.1% ≤50000h |
| Dimming range | 1%- 100% |
| Dimming method | CCR_PWM |
| LMF | E |
| Standby power per control gear | -- |
| Luminaires per circuit breaker B16 | 112 |



Mounting
 ERCO 3-circuit track
 Hi-trac 3-circuit track
 1-circuit singlet

For your regional contact in the ERCO
 Sales network click here
www.erco.com/contact

Technical Region: 220-240V 50/60Hz
 We reserve the right to make technical
 and design changes.
 Edition: 16.11.2022
 Current version under
www.erco.com/71701.000

Planning data

| Cleaning (a) | 1 | | | | 2 | | | | 3 | | | |
|--------------|------|------|------|------|------|------|------|------|------|------|------|------|
| | P | C | N | D | P | C | N | D | P | C | N | D |
| LMF | 0.96 | 0.94 | 0.90 | 0.86 | 0.93 | 0.91 | 0.86 | 0.81 | 0.92 | 0.90 | 0.84 | 0.79 |
| RSMF | 0.99 | 0.97 | 0.95 | 0.92 | 0.98 | 0.97 | 0.95 | 0.92 | 0.98 | 0.97 | 0.95 | 0.92 |

| Hours of operation (h) | 1000 | 5000 | 10000 | 20000 | 30000 | 40000 | 50000 |
|------------------------|------|------|-------|-------|-------|-------|-------|
| LLMF | 1.00 | 0.99 | 0.98 | 0.96 | 0.94 | 0.92 | 0.90 |
| LSF | 1 | 1 | 1 | 1 | 1 | 1 | 1 |

- MF LMFxRSMFxLLMFxLSF
- MF Maintenance Factor
- LMF Luminaire Maintenance Factor
- RSMF Room Surface Maintenance Factor
- LLMF Lamp Lumens Maintenance Factor
- LSF Lamp Survival Factor
- P Room pure
- C Room clean
- N Room normal
- D Room dirty

Data according to regulations

2019/2020/EU supplemented by 2021/341/EU and 2019/2015/EU supplemented by 2021/340/EU Energy Consumption Labelling Ordinance

This product contains a light source of efficiency class D
 Due to thermal and photometric properties as well as to protect electronic components from ESD (electrostatic discharge) the light source cannot be changed by the customer.

ID EPREL: 696743
 Model identifier: 3000054478
 Download data sheets for control gear and disassembly instructions at www.erco.com/slr

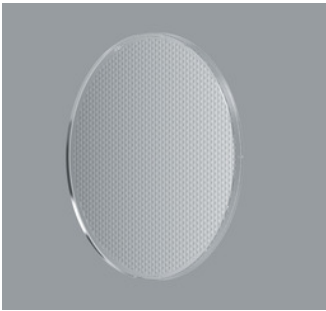
Technical data in accordance with international norms and standards

- IEC 60598 Luminaires – Part 1+2: general requirements, specific requirements and tests
- IEC 62031 LED modules for general lighting – safety requirements
- IEC 62471 Photobiological safety of lamps and lamp systems
- EN 13032-4 Light and lighting – measurement and representation of photometric data
- CIE 13 Method of measuring and specifying colour rendering properties of light sources

All technical data is subject to industry-standard tolerances.
 Also see www.erco.com/erco-led

For explanations of the symbols and abbreviations used and other general information, see www.erco.com/symbols

Accessories



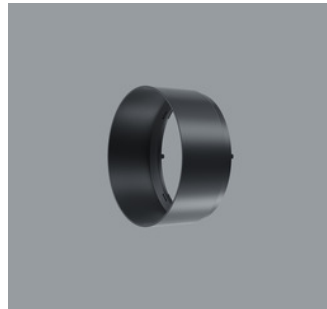
70863.000
Spherolit lens spot
made of optical polymer.
Replacement without tools.



70684.000
Snoot
Polymer.
White



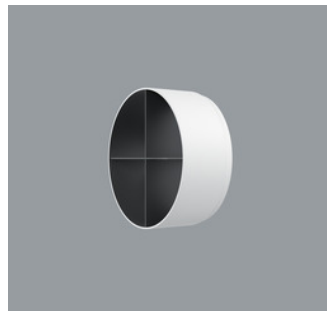
70848.000
Spherolit lens flood
made of optical polymer.
Replacement without tools.



70635.000
Snoot
Polymer.
Black



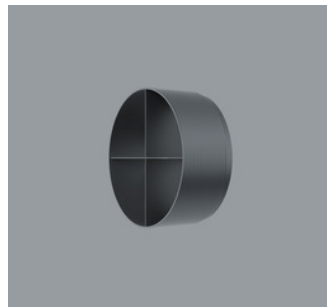
70849.000
Spherolit lens wide flood
made of optical polymer.
Replacement without tools.



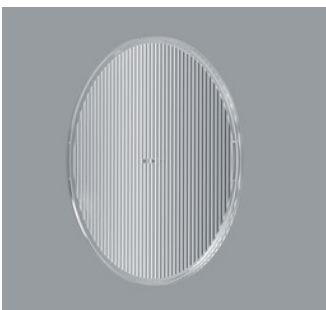
78037.000
Cross-baffle
Aluminium, coated black, polymer
outer.
White



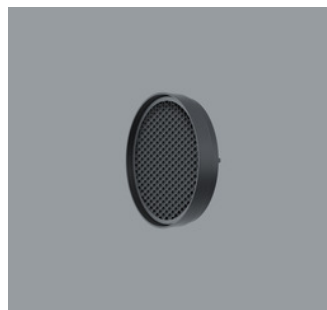
73998.000
Spherolit lens extra wide flood
made of optical polymer.
Replacement without tools.



78041.000
Cross-baffle
Aluminium, coated black, polymer
outer.
Black



70864.000
Spherolit lens oval flood
made of optical polymer.
Replacement without tools.



78033.000
Honeycomb anti-glare screen
Black



70865.000
Spherolit lens wallwash
made of optical polymer.
Replacement without tools.