

**73856.000** Black  
 LED module: 24W 3300lm 4000K  
 neutral white  
 Switchable  
 Version 4  
 Spherolit lens, wallwash

**Product description**  
 Housing and bracket: cast aluminium, powder-coated. 0°-90° tilt. Bracket on 3-circuit adapter rotatable through 360°. Internal wiring. ERCO control gear. 3-phase adapter for ERCO 220-240V track: polymer, black. LED module: high-power LEDs on metal-core PCB. Collimating lens made of optical polymer. Weight 0.94kg

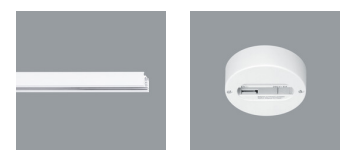
**Mean illuminance  $E_n$  (wall)**

Angle of tilt 35°

Wall height (m)	6			
Offset from wall (m)	1.75	2.00	2.00	2.00
Luminaire spacing (m)	1.75	2.25	2.00	2.50
Illuminance $E_n$ (lx)	<b>228</b>	<b>177</b>	<b>185</b>	<b>148</b>

**Technical data**

Luminous flux of the luminaire	2779lm
Connected load	27.0W
Luminaire efficacy	103lm/W
Colour deviation	1.5 SDCM
Colour rendition index	CRI 82
Lumen maintenance (LED manufacturer specifications)	L90/B10 $\leq$ 50000h L90 $\leq$ 100000h
LED failure rate	0.1% $\leq$ 50000h
Dimming range	--
Dimming method	--
LMF	E
Standby power per control gear	--
Luminaires per circuit breaker B16	44



**Mounting**  
 ERCO 3-circuit track  
 Hi-trac 3-circuit track  
 1-circuit singlet

For your regional contact in the ERCO  
 Sales network click here  
[www.erco.com/contact](http://www.erco.com/contact)

Technical Region: 220-240V 50/60Hz  
 We reserve the right to make technical and design changes.  
 Edition: 16.11.2022  
 Current version under  
[www.erco.com/73856.000](http://www.erco.com/73856.000)

## Planning data

### Illuminance $E_n$ (lx)

Specifications:

Number of luminaires  $n > 5$

Wall height (m) 6.0

Angle of tilt 35°

Offset from wall (m)	1.75				2.00				2.00			
	Luminaire spacing (m)				2.25				2.50			
	below the luminaire	between the luminaires	below the luminaire	between the luminaires	below the luminaire	between the luminaires	below the luminaire	between the luminaires	below the luminaire	between the luminaires	below the luminaire	between the luminaires
0.500	100	110	78	85	71	78	57	63				
1.000	205	213	172	154	139	148	117	113				
1.500	278	296	239	202	203	209	176	152				
2.000	281	326	239	227	216	245	187	177				
2.500	282	316	236	226	215	248	183	184				
3.000	274	295	228	214	214	238	182	179				
3.500	251	267	205	197	209	223	176	170				
4.000	214	226	171	171	191	203	159	156				
4.500	175	184	138	142	166	175	136	138				
5.000	139	145	109	114	140	147	113	117				
5.500	110	113	85	90	115	120	92	97				

Cleaning (a)	1				2				3			
	P	C	N	D	P	C	N	D	P	C	N	D
LMF	0.96	0.94	0.90	0.86	0.93	0.91	0.86	0.81	0.92	0.90	0.84	0.79
RSMF	0.99	0.97	0.95	0.92	0.98	0.97	0.95	0.92	0.98	0.97	0.95	0.92

Hours of operation (h)	1000	5000	10000	20000	30000	40000	50000
LLMF	1.00	0.99	0.98	0.96	0.94	0.92	0.90
LSF	1	1	1	1	1	1	1

- MF LMFxRSMFxLLMFxLSF
- MF Maintenance Factor
- LMF Luminaire Maintenance Factor
- RSMF Room Surface Maintenance Factor
- LLMF Lamp Lumens Maintenance Factor
- LSF Lamp Survival Factor
- P Room pure
- C Room clean
- N Room normal
- D Room dirty

### Data according to regulations

2019/2020/EU supplemented by 2021/341/EU and 2019/2015/EU supplemented by 2021/340/EU Energy Consumption Labelling Ordinance

This product contains a light source of efficiency class D

Due to thermal and photometric properties as well as to protect electronic components from ESD (electrostatic discharge) the light source cannot be changed by the customer.

ID EPREL: 696743

Model identifier: 3000054478

Download data sheets for control gear and disassembly instructions at [www.erco.com/slr](http://www.erco.com/slr)

### Technical data in accordance with international norms and standards

IEC 60598	Luminaires – Part 1+2: general requirements, specific requirements and tests
IEC 62031	LED modules for general lighting – safety requirements
IEC 62471	Photobiological safety of lamps and lamp systems
EN 13032-4	Light and lighting – measurement and representation of photometric data
CIE 13	Method of measuring and specifying colour rendering properties of light sources

All technical data is subject to industry-standard tolerances. Also see [www.erco.com/erco-led](http://www.erco.com/erco-led)

For explanations of the symbols and abbreviations used and other general information, see [www.erco.com/symbols](http://www.erco.com/symbols)

## Accessories



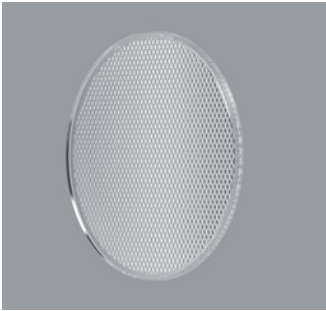
**70863.000**  
Spherolit lens spot  
made of optical polymer.  
Replacement without tools.



**70636.000**  
Snoot  
Polymer.  
Black



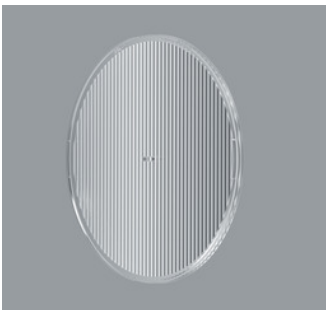
**70848.000**  
Spherolit lens flood  
made of optical polymer.  
Replacement without tools.



**70849.000**  
Spherolit lens wide flood  
made of optical polymer.  
Replacement without tools.



**73998.000**  
Spherolit lens extra wide flood  
made of optical polymer.  
Replacement without tools.



**70864.000**  
Spherolit lens oval flood  
made of optical polymer.  
Replacement without tools.



**70865.000**  
Spherolit lens wallwash  
made of optical polymer.  
Replacement without tools.