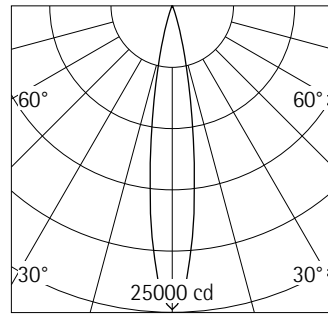


**74590.000** White (RAL9002)  
 LED module: 24W 3300lm 4000K  
 neutral white  
 Switchable  
 Version 4  
 Spherolit lens, spot

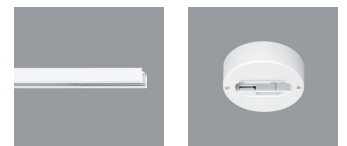
**Product description**  
 Housing and bracket: cast aluminium, powder-coated. 0°-90° tilt. Bracket on 3-circuit adapter rotatable through 360°. Internal wiring. ERCO control gear. 3-phase adapter for ERCO 220-240V track: polymer, white. LED module: high-power LEDs on metal-core PCB. Collimating lens made of optical polymer. Weight 0.94kg



| h(m) | E(lx) | D(m) |
|------|-------|------|
|      |       | 16°  |
| 1    | 24783 | 0.28 |
| 2    | 6196  | 0.56 |
| 3    | 2754  | 0.84 |
| 4    | 1549  | 1.12 |
| 5    | 991   | 1.41 |

**Technical data**

|   |                                 |
|---|---------------------------------|
| Luminous flux of the luminaire                      | 2814lm                          |
| Connected load                                      | 27.0W                           |
| Luminaire efficacy                                  | 104lm/W                         |
| Colour deviation                                    | 1.5 SDCM                        |
| Colour rendition index                              | CRI 82                          |
| Lumen maintenance (LED manufacturer specifications) | L90/B10 ≤50000h<br>L90 ≤100000h |
| LED failure rate                                    | 0.1% ≤50000h                    |
| Dimming range                                       | --                              |
| Dimming method                                      | --                              |
| LMF   | E                               |
| Standby power per control gear                      | --                              |
| Luminaires per circuit breaker B16                  | 44                              |



**Mounting**  
 ERCO 3-circuit track  
 Hi-trac 3-circuit track  
 1-circuit singlet

For your regional contact in the ERCO  
 Sales network click here  
[www.ercos.com/contact](http://www.ercos.com/contact)

Technical Region: 220-240V 50/60Hz  
 We reserve the right to make technical  
 and design changes.  
 Edition: 16.11.2022  
 Current version under  
[www.ercos.com/74590.000](http://www.ercos.com/74590.000)

## Planning data

| Cleaning (a) | 1    |      |      |      | 2    |      |      |      | 3    |      |      |      |
|--------------|------|------|------|------|------|------|------|------|------|------|------|------|
|              | P    | C    | N    | D    | P    | C    | N    | D    | P    | C    | N    | D    |
| LMF          | 0.96 | 0.94 | 0.90 | 0.86 | 0.93 | 0.91 | 0.86 | 0.81 | 0.92 | 0.90 | 0.84 | 0.79 |
| RSMF         | 0.99 | 0.97 | 0.95 | 0.92 | 0.98 | 0.97 | 0.95 | 0.92 | 0.98 | 0.97 | 0.95 | 0.92 |

| Hours of operation (h) | 1000 | 5000 | 10000 | 20000 | 30000 | 40000 | 50000 |
|------------------------|------|------|-------|-------|-------|-------|-------|
| LLMF                   | 1.00 | 0.99 | 0.98  | 0.96  | 0.94  | 0.92  | 0.90  |
| LSF                    | 1    | 1    | 1     | 1     | 1     | 1     | 1     |

- MF LMFxRSMFxLLMFxLSF
- MF Maintenance Factor
- LMF Luminaire Maintenance Factor
- RSMF Room Surface Maintenance Factor
- LLMF Lamp Lumens Maintenance Factor
- LSF Lamp Survival Factor
- P Room pure
- C Room clean
- N Room normal
- D Room dirty

### Data according to regulations

2019/2020/EU supplemented by 2021/341/EU and 2019/2015/EU supplemented by 2021/340/EU Energy Consumption Labelling Ordinance

This product contains a light source of efficiency class D

Due to thermal and photometric properties as well as to protect electronic components from ESD (electrostatic discharge) the light source cannot be changed by the customer.

ID EPREL: 696743

Model identifier: 3000054478

Download data sheets for control gear and disassembly instructions at [www.erco.com/slr](http://www.erco.com/slr)

### Technical data in accordance with international norms and standards

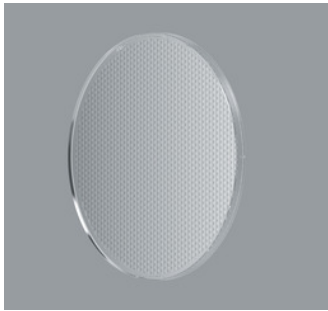
- IEC 60598 Luminaires – Part 1+2: general requirements, specific requirements and tests
- IEC 62031 LED modules for general lighting – safety requirements
- IEC 62471 Photobiological safety of lamps and lamp systems
- EN 13032-4 Light and lighting – measurement and representation of photometric data
- CIE 13 Method of measuring and specifying colour rendering properties of light sources

All technical data is subject to industry-standard tolerances.

Also see [www.erco.com/erco-led](http://www.erco.com/erco-led)

For explanations of the symbols and abbreviations used and other general information, see [www.erco.com/symbols](http://www.erco.com/symbols)

## Accessories



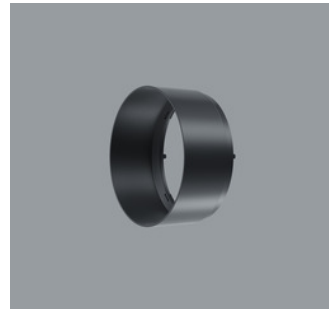
**70863.000**  
Spherolit lens spot  
made of optical polymer.  
Replacement without tools.



**70684.000**  
Snoot  
Polymer.  
White



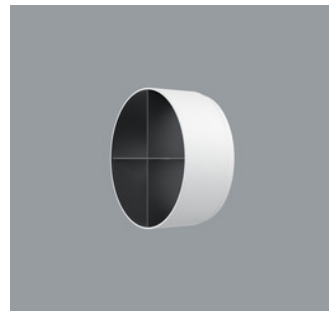
**70848.000**  
Spherolit lens flood  
made of optical polymer.  
Replacement without tools.



**70635.000**  
Snoot  
Polymer.  
Black



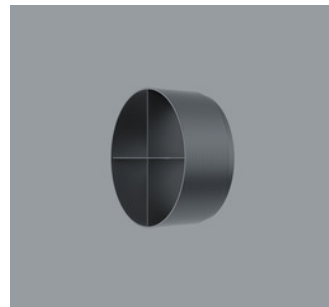
**70849.000**  
Spherolit lens wide flood  
made of optical polymer.  
Replacement without tools.



**78037.000**  
Cross-baffle  
Aluminium, coated black, polymer  
outer.  
White



**73998.000**  
Spherolit lens extra wide flood  
made of optical polymer.  
Replacement without tools.



**78041.000**  
Cross-baffle  
Aluminium, coated black, polymer  
outer.  
Black



**70864.000**  
Spherolit lens oval flood  
made of optical polymer.  
Replacement without tools.



**78033.000**  
Honeycomb anti-glare screen  
Black



**70865.000**  
Spherolit lens wallwash  
made of optical polymer.  
Replacement without tools.

