

A1001924 Black
 LED module: 12.8W 1375lm 2700K
 warm white
 Casambi Bluetooth
 Version 1
 Size M
 Spherolit lens, wallwash

Product description
 Housing: cast aluminium, powder-coated; can be swivelled through 90° on the bracket. Upper cover made of polymer.
 Bracket: cast aluminium/polymer, coated; can be rotated through 360° on the adapter.
 Minirail adapter for ERCO Minirail 48V track: polymer, black.
 ERCO control gear.
 Add-on control unit: Casambi Bluetooth.
 LED module: high-power LEDs. Collimating lens made of optical polymer.
 Lens unit: polymer, black. Spherolit lens made of optical polymer.
 Control via Casambi app (Android/iOS) with Bluetooth Low Energy (BLE)-capable mobile devices or "Casambi Ready" products.
 Protection Class III
 Weight 0.50kg

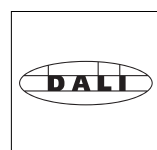
Mean illuminance E_n (wall)

Angle of tilt 35°

| | | | | |
|---------------------------------|------------|------------|------------|------------|
| Wall height (m) | 4 | | | |
| Offset from wall (m) | 1.00 | 1.25 | 1.50 | 1.75 |
| Luminaire spacing (m) | 1.25 | 1.50 | 1.50 | 1.75 |
| Illuminance E _n (lx) | 194 | 162 | 142 | 122 |

Technical data

| | |
|---|---------------------------------|
| Luminous flux of the luminaire | 1022lm |
| Connected load | 13.6W |
| Luminaire efficacy | 75lm/W |
| Colour deviation | 1.5 SDCM |
| Colour rendition index | CRI 92 |
| Lumen maintenance (LED manufacturer specifications) | L90/B10 ≤50000h L90 ≤100000h |
| LED failure rate | 0.1% ≤50000h |
| Dimming range | 0.1%-100% |
| Dimming method | CCR |
| LMF | E |
| Standby power per control gear | 0.3W |
| Luminaires per circuit breaker B16 | -- |



DALI controllable via accessory
 DALI Casambi Gateway for controlling Casambi Bluetooth via DALI.



Mounting
 Minirail 48V track
 Minirail 48V singlet

Planning data

Illuminance E_n (lx)

Specifications:

Number of luminaires n > 5

Wall height (m) 4.0

Angle of tilt 35°

| Offset from wall (m) | 1.00 | | 1.00 | | 1.25 | | 1.25 | |
|-----------------------|---------------------|------------------------|---------------------|------------------------|---------------------|------------------------|---------------------|------------------------|
| | 1.25 | | 1.50 | | 1.50 | | 1.75 | |
| Luminaire spacing (m) | below the luminaire | between the luminaires | below the luminaire | between the luminaires | below the luminaire | between the luminaires | below the luminaire | between the luminaires |
| 0.500 | 143 | 161 | 131 | 117 | 85 | 97 | 78 | 76 |
| 0.750 | 205 | 215 | 181 | 171 | 119 | 134 | 107 | 111 |
| 1.000 | 240 | 242 | 208 | 192 | 149 | 151 | 131 | 127 |
| 1.250 | 241 | 252 | 207 | 202 | 161 | 165 | 140 | 137 |
| 1.500 | 236 | 250 | 201 | 205 | 161 | 168 | 140 | 142 |
| 1.750 | 231 | 240 | 194 | 199 | 158 | 167 | 137 | 143 |
| 2.000 | 222 | 227 | 186 | 188 | 156 | 163 | 134 | 140 |
| 2.250 | 207 | 210 | 174 | 174 | 152 | 157 | 130 | 135 |
| 2.500 | 186 | 190 | 157 | 156 | 146 | 149 | 125 | 128 |
| 2.750 | 162 | 166 | 137 | 137 | 138 | 140 | 119 | 120 |
| 3.000 | 137 | 141 | 116 | 117 | 127 | 129 | 110 | 110 |
| 3.250 | 114 | 117 | 96 | 97 | 114 | 117 | 99 | 100 |
| 3.500 | 94 | 96 | 79 | 80 | 101 | 104 | 87 | 89 |

Melanopic light effect

| Art. no. | Spectrum | MR | MDER |
|-------------------|--------------|------|------|
| A1001924 (direct) | 2700K CRI 92 | 0.48 | 0.43 |

MR Melanopic ratio according to DIN SPEC 5031-100-100:2015-08: "amel;v"

MDER Melanopic daylight equivalent ratio according to DIN SPEC 5031-100-100:2015-08: "amel;D65;v"

Multiplying the melanopic ratio MR with the illuminance gives the equivalent melanopic illuminance EML (equivalent melanopic lux). The equivalent illuminance with daylight (D65) is obtained by multiplying the illuminance by the melanopic daylight equivalent ratio MDER.

| Cleaning (a) | 1 | | | | 2 | | | | 3 | | | |
|------------------------|------|------|-------|-------|-------|-------|-------|------|------|------|------|------|
| | P | C | N | D | P | C | N | D | P | C | N | D |
| Ambient conditions | 0.96 | 0.94 | 0.90 | 0.86 | 0.93 | 0.91 | 0.86 | 0.81 | 0.92 | 0.90 | 0.84 | 0.79 |
| LMF | 0.99 | 0.97 | 0.95 | 0.92 | 0.98 | 0.97 | 0.95 | 0.92 | 0.98 | 0.97 | 0.95 | 0.92 |
| RSMF | | | | | | | | | | | | |
| Hours of operation (h) | 1000 | 5000 | 10000 | 20000 | 30000 | 40000 | 50000 | | | | | |
| LLMF | 1.00 | 0.99 | 0.98 | 0.96 | 0.94 | 0.92 | 0.90 | | | | | |
| LSF | 1 | 1 | 1 | 1 | 1 | 1 | 1 | | | | | |

- MF LMFxRSMFxLLMFxLSF
- MF Maintenance Factor
- LMF Luminaire Maintenance Factor
- RSMF Room Surface Maintenance Factor
- LLMF Lamp Lumens Maintenance Factor
- LSF Lamp Survival Factor
- P Room pure
- C Room clean
- N Room normal
- D Room dirty

Data according to regulations

2019/2020/EU supplemented by 2021/341/EU and 2019/2015/EU supplemented by 2021/340/EU Energy Consumption Labelling Ordinance

This product contains a light source of efficiency class F
 Due to thermal and photometric properties as well as to protect electronic components from ESD (electrostatic discharge) the light source cannot be changed by the customer.

ID EPREL: 697075
 Model identifier: 3000059326
 Download data sheets for control gear and disassembly instructions at www.erco.com/slr

Planning data

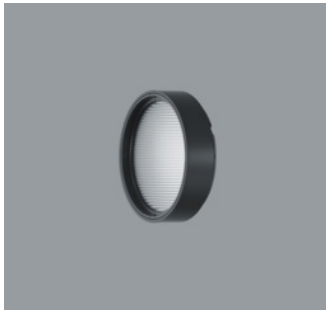
Technical data in accordance with international norms and standards

| | |
|------------|---|
| IEC 60598 | Luminaires – Part 1+2: general requirements, specific requirements and tests |
| IEC 62031 | LED modules for general lighting – safety requirements |
| IEC 62471 | Photobiological safety of lamps and lamp systems |
| EN 13032-4 | Light and lighting – measurement and representation of photometric data |
| CIE 13 | Method of measuring and specifying colour rendering properties of light sources |

All technical data is subject to industry-standard tolerances.
Also see www.erco.com/erco-led

For explanations of the symbols and abbreviations used and other general information, see www.erco.com/symbols

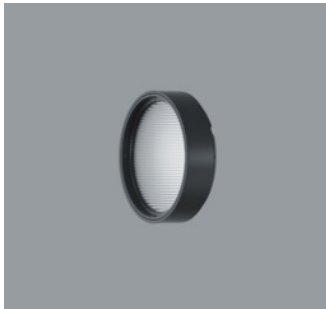
Accessories



AC002074
 Lens unit spot
 Polymer, black lacquered, rotatable through 360°. Replacement without tools.
 Spherolit lens made of optical polymer.



AC002077
 Lens unit wallwash
 Polymer, black lacquered, rotatable through 360°. Replacement without tools.
 Spherolit lens made of optical polymer.



AC002072
 Lens unit flood
 Polymer, black lacquered, rotatable through 360°. Replacement without tools.
 Spherolit lens made of optical polymer.



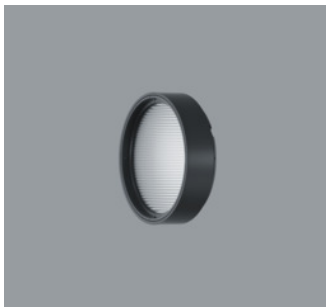
AC002119
 Lens unit zoom spot
 Polymer, black lacquered, rotatable through 360°. Replacement without tools.
 Anti-reflective zoom lens made of optical polymer, infinitely variable focus.



AC002071
 Lens unit wide flood
 Polymer, black lacquered, rotatable through 360°. Replacement without tools.
 Spherolit lens made of optical polymer.



AC002121
 Lens unit zoom oval
 Polymer, black lacquered, rotatable through 360°. Replacement without tools.
 Anti-reflective zoom lens made of optical polymer, infinitely variable focus.



AC002075
 Lens unit extra wide flood
 Polymer, black lacquered, rotatable through 360°. Replacement without tools.
 Spherolit lens made of optical polymer.



AC002262
 Lens unit narrow framing
 Aluminium/polymer, coated black, pivotable through 360°. Replacement without tools.
 Projection lens, continuously focusable. Ideal for long projection distances.
 Framing attachment: stainless steel, black.
 Aperture.



AC002073
 Lens unit oval flood
 Polymer, black lacquered, rotatable through 360°. Replacement without tools.
 Spherolit lens made of optical polymer.



AC002265
 Lens unit wide framing
 Aluminium/polymer, coated black, pivotable through 360°. Replacement without tools.
 2 projection lenses, continuously focusable. Ideal for short projection distances.
 Framing attachment: stainless steel, black.
 Aperture.

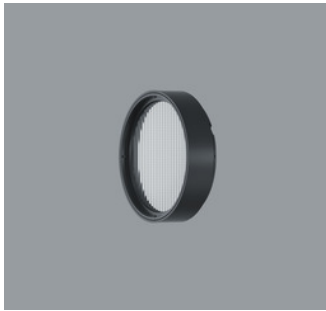


AC002079
 Lens unit oval wide flood
 Polymer, black lacquered, rotatable through 360°. Replacement without tools.
 Spherolit lens made of optical polymer.

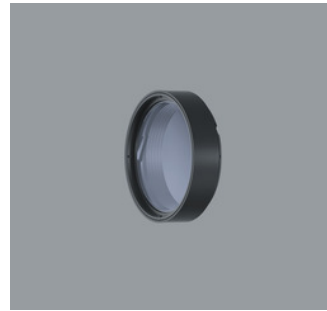


AC006001
 Softening lens
 Filter holder: polymer, black, rotatable through 360°. Replacement without tools.

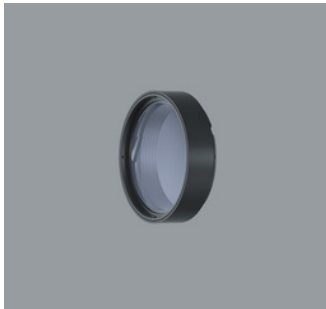
Accessories



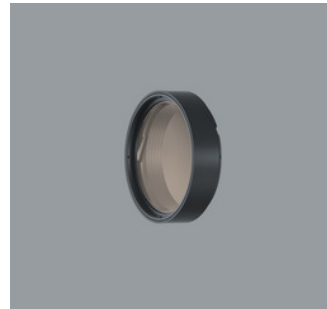
AC006026
Sculpture lens
Filter holder: polymer, black, rotatable through 360°. Replacement without tools.



AC006011
Fish Filter
Filter holder: polymer, black, rotatable through 360°. Replacement without tools.



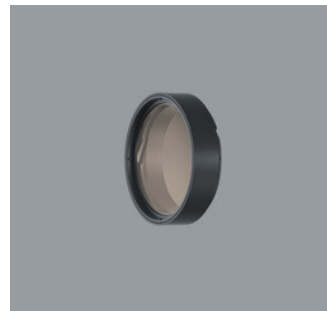
AC006032
Cold Filter
Filter holder: polymer, black, rotatable through 360°. Replacement without tools.



AC006033
Marbled Meat Filter
Filter holder: polymer, black, rotatable through 360°. Replacement without tools.



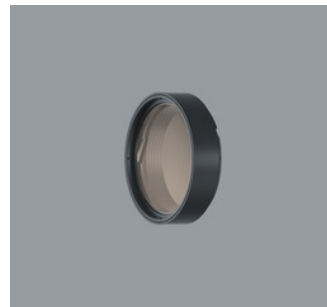
AC006030
Cold Filter Plus
Filter holder: polymer, black, rotatable through 360°. Replacement without tools.



AC006031
Bread and Pastry Filter
Filter holder: polymer, black, rotatable through 360°. Replacement without tools.



AC006028
Warm Filter
Filter holder: polymer, black, rotatable through 360°. Replacement without tools.



AC006023
Blue Light Filter
Filter holder: polymer, black, rotatable through 360°. Replacement without tools.



AC006012
Warm Filter Plus
Filter holder: polymer, black, rotatable through 360°. Replacement without tools.



AC001005
Snoot
Polymer, black.

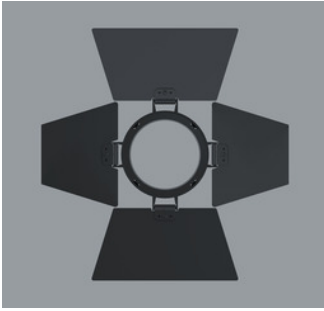


AC006029
Skintone Filter
Filter holder: polymer, black, rotatable through 360°. Replacement without tools.

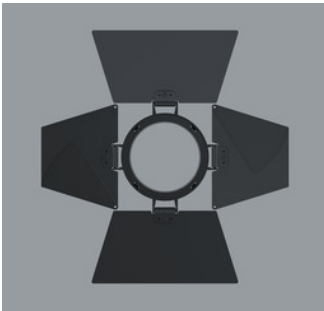


AC004025
Honeycomb anti-glare screen
Black

Accessories



AC005001
Barn doors 4-fold
Aluminium, coated black.



AC005003
Barn doors 8-fold
Aluminium, coated black.



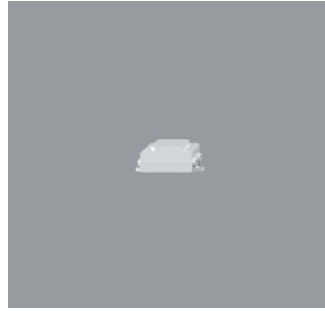
AC003002
Add-on Control Unit On-board Dim
Polymer, black. Replacement without tools.
Rotary control for brightness regulation.



AC003004
Add-on Control Unit Zigbee
Polymer, black. Replacement without tools.
Control via a Zigbee 3.0 compliant hub.

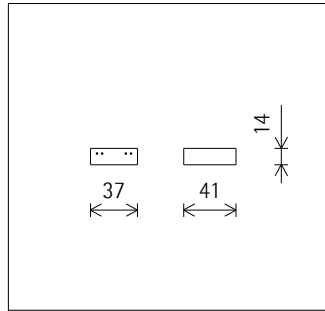


AC003001
Add-on Control Unit Casambi Bluetooth
Polymer, black. Replacement without tools.
Control via Casambi app (Android/iOS) with Bluetooth Low Energy (BLE)-capable mobile devices or "Casambi Ready" products.



AC007001
DALI Casambi Gateway
Enables DALI systems to be connected to luminaires, sensors and control units with Casambi Bluetooth. The gateway can only be operated in Evolution networks. Power is supplied exclusively via the DALI bus. Connection via two lines which must be designed for mains voltage. The gateway requires no DALI addresses, the devices appear as non-configured devices in the DALI system. Addressing/commissioning is performed via the DALI control. It can individually control 64 devices, and via the broadcast command up to 249 devices.

CE



56012.000
ERCO Casambi motion detector with light sensor for ERCO Minirail 48V track. Setup via Casambi app (Android/iOS) with Bluetooth Low Energy (BLE)-capable mobile devices. Use for daylight-dependent light control with or without motion detector. Detection range of infrared (PIR) sensor 100°/ 5m. At 3m room height, this is a circle with diameter of approx. 7m. Minirail adapter for ERCO Minirail 48V track: polymer, black. Available from 2nd quarter 2023
Black
Weight 0.18kg
CE