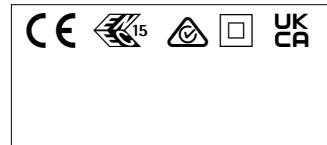
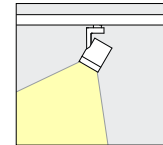
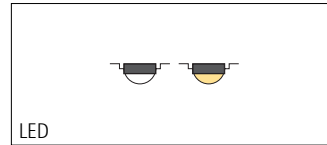
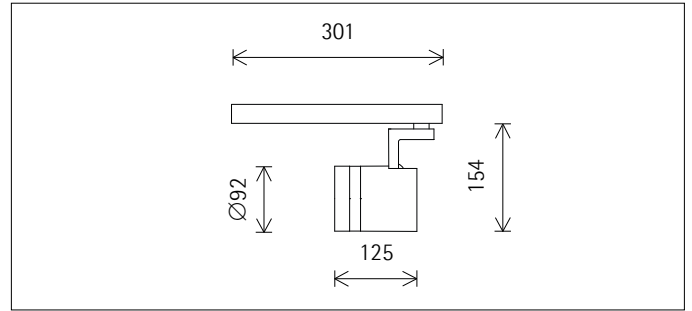
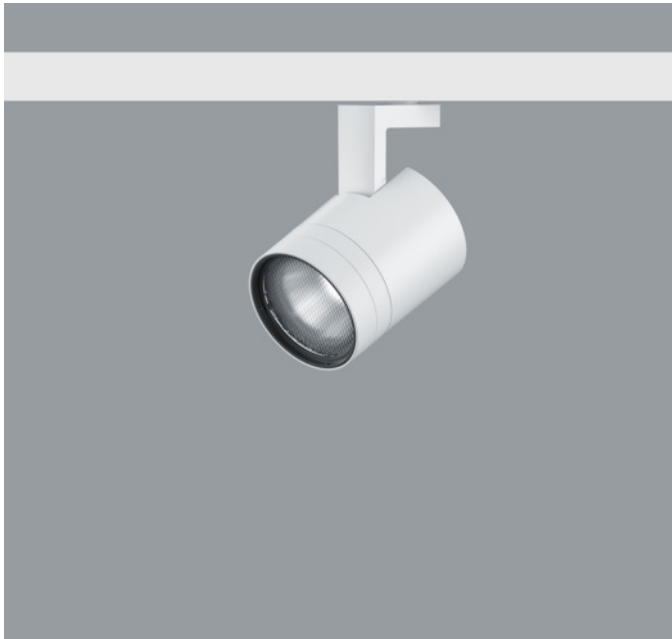
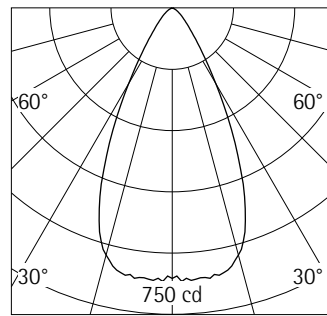


with Intrack adapter



**A1003566** White (RAL9002)  
 LED module: 12.6W 1335lm 2700 - 7500K Tunable white  
 Multi Dim  
 Version 1  
 Size M  
 Spherolit lens, wide flood

**Product description**  
 Housing: cast aluminium, powder-coated; can be swivelled through 90° on the bracket. Upper cover made of polymer.  
 Bracket: cast aluminium/polymer, coated; can be rotated through 360° on the adapter.  
 Intrack adapter for ERCO 220-240V track: polymer, white.  
 ERCO Multi Dim control gear: DALI dimmable, Push Dim, phase dimmable.  
 Lens unit: polymer, white. Spherolit lens made of optical polymer.  
 LED module: high-power LEDs. Color mixer. Collimating lens made of optical polymer.  
 Dimming possible with external dimmers (phase and universal dimmers) or standard push-buttons (Push Dim).  
 Protection Class II  
 Weight 0.74kg



h(m)	E(lx)	D(m)
		52°
1	662	0.98
2	166	1.95
3	74	2.93
4	41	3.90
5	26	4.88

**Technical data**

Luminous flux of the luminaire	547lm
Connected load	16.9W
Luminaire efficacy	32lm/W
Colour deviation	2.0 SDCM
Colour rendition index	CRI 92
Lumen maintenance (LED manufacturer specifications)	L90/B10 ≤50000h L80/B50 ≤100000h
LED failure rate	0.1% ≤50000h
Dimming range	0.1%-100%
Dimming method	CCR
LMF	E
Standby power per control gear	0.4W
Luminaires per circuit breaker B16	213



**Mounting**  
 ERCO track  
 Hi-trac track

## Planning data

### Melanopic light effect

Art. no.	Spectrum	MR	MDER
A1003566 (direct)	2700K CRI 92	0.49	0.44
	7500K CRI 92	1.50	1.36

MR Melanopic ratio according to DIN SPEC 5031-100-100:2015-08: "amel;v"

MDER Melanopic daylight equivalent ratio according to DIN SPEC 5031-100-100:2015-08: "amel;D65;v"

Multiplying the melanopic ratio MR with the illuminance gives the equivalent melanopic illuminance EML (equivalent melanopic lux). The equivalent illuminance with daylight (D65) is obtained by multiplying the illuminance by the melanopic daylight equivalent ratio MDER.

Cleaning (a)	1				2				3			
	P	C	N	D	P	C	N	D	P	C	N	D
LMF	0.96	0.94	0.90	0.86	0.93	0.91	0.86	0.81	0.92	0.90	0.84	0.79
RSMF	0.99	0.97	0.95	0.92	0.98	0.97	0.95	0.92	0.98	0.97	0.95	0.92
Hours of operation (h)	1000	5000	10000	20000	30000	40000	50000					
LLMF	1.00	0.99	0.98	0.96	0.94	0.92	0.90					
LSF	1	1	1	1	1	1	1					

- MF LMFxRSMFxLLMFxLSF
- MF Maintenance Factor
- LMF Luminaire Maintenance Factor
- RSMF Room Surface Maintenance Factor
- LLMF Lamp Lumens Maintenance Factor
- LSF Lamp Survival Factor
- P Room pure
- C Room clean
- N Room normal
- D Room dirty

### Data according to regulations

2019/2020/EU supplemented by 2021/341/EU and 2019/2015/EU supplemented by 2021/340/EU Energy Consumption Labelling Ordinance

This product contains a light source of efficiency class E  
 Due to thermal and photometric properties as well as to protect electronic components from ESD (electrostatic discharge) the light source cannot be changed by the customer.

ID EPREL: 697056  
 Model identifier: 3000057462  
 Download data sheets for control gear and disassembly instructions at [www.erco.com/slr](http://www.erco.com/slr)

### Technical data in accordance with international norms and standards

IEC 60598	Luminaires – Part 1+2: general requirements, specific requirements and tests
IEC 62031	LED modules for general lighting – safety requirements
IEC 62471	Photobiological safety of lamps and lamp systems
EN 13032-4	Light and lighting – measurement and representation of photometric data
CIE 13	Method of measuring and specifying colour rendering properties of light sources

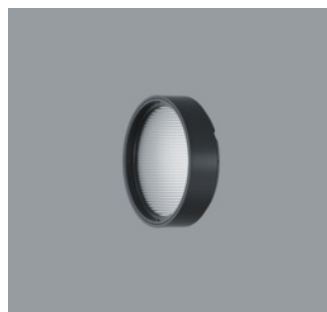
All technical data is subject to industry-standard tolerances.  
 Also see [www.erco.com/erco-led](http://www.erco.com/erco-led)

For explanations of the symbols and abbreviations used and other general information, see [www.erco.com/symbols](http://www.erco.com/symbols)

## Accessories



**AC002074**  
 Lens unit spot  
 Polymer, black lacquered, rotatable through 360°. Replacement without tools.  
 Spherolit lens made of optical polymer.



**AC002075**  
 Lens unit extra wide flood  
 Polymer, black lacquered, rotatable through 360°. Replacement without tools.  
 Spherolit lens made of optical polymer.



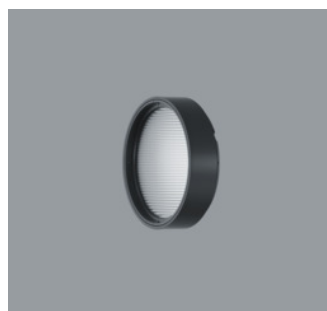
**AC002109**  
 Lens unit spot  
 Polymer, white, rotatable through 360°. Replacement without tools.  
 Spherolit lens made of optical polymer.



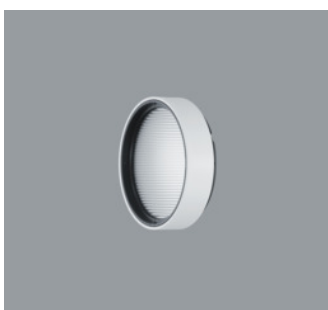
**AC002110**  
 Lens unit extra wide flood  
 Polymer, white, rotatable through 360°. Replacement without tools.  
 Spherolit lens made of optical polymer.



**AC002072**  
 Lens unit flood  
 Polymer, black lacquered, rotatable through 360°. Replacement without tools.  
 Spherolit lens made of optical polymer.



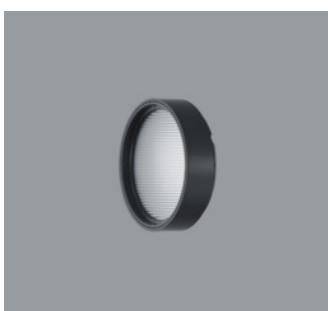
**AC002073**  
 Lens unit oval flood  
 Polymer, black lacquered, rotatable through 360°. Replacement without tools.  
 Spherolit lens made of optical polymer.



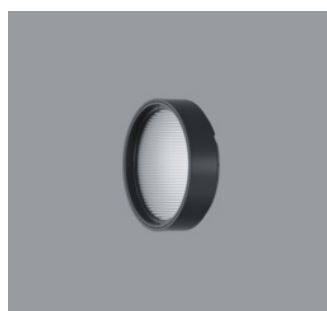
**AC002106**  
 Lens unit flood  
 Polymer, white, rotatable through 360°. Replacement without tools.  
 Spherolit lens made of optical polymer.



**AC002108**  
 Lens unit oval flood  
 Polymer, white, rotatable through 360°. Replacement without tools.  
 Spherolit lens made of optical polymer.



**AC002071**  
 Lens unit wide flood  
 Polymer, black lacquered, rotatable through 360°. Replacement without tools.  
 Spherolit lens made of optical polymer.



**AC002079**  
 Lens unit oval wide flood  
 Polymer, black lacquered, rotatable through 360°. Replacement without tools.  
 Spherolit lens made of optical polymer.

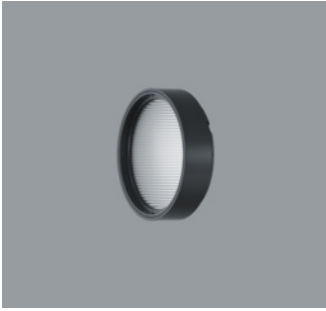


**AC002105**  
 Lens unit wide flood  
 Polymer, white, rotatable through 360°. Replacement without tools.  
 Spherolit lens made of optical polymer.



**AC002114**  
 Lens unit oval wide flood  
 Polymer, white, rotatable through 360°. Replacement without tools.  
 Spherolit lens made of optical polymer.

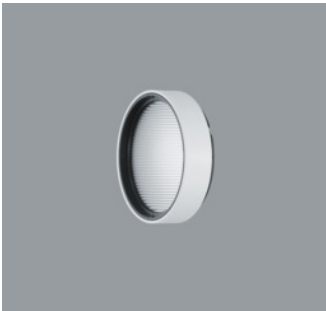
Accessories



**AC002077**  
 Lens unit wallwash  
 Polymer, black lacquered, rotatable through 360°. Replacement without tools.  
 Spherolit lens made of optical polymer.



**AC002234**  
 Lens unit narrow framing  
 Aluminium/polymer, coated black, pivotable through 360°. Replacement without tools.  
 Projection lens, continuously focusable. Ideal for long projection distances.  
 Framing attachment: stainless steel, black.  
 Aperture.



**AC002112**  
 Lens unit wallwash  
 Polymer, white, rotatable through 360°. Replacement without tools.  
 Spherolit lens made of optical polymer.



**AC002236**  
 Lens unit narrow framing  
 Aluminium/polymer, coated white, pivotable through 360°. Replacement without tools.  
 Projection lens, continuously focusable. Ideal for long projection distances.  
 Framing attachment: stainless steel, black.  
 Aperture.



**AC002119**  
 Lens unit zoom spot  
 Polymer, black lacquered, rotatable through 360°. Replacement without tools.  
 Anti-reflective zoom lens made of optical polymer, infinitely variable focus.



**AC002212**  
 Lens unit wide framing  
 Aluminium/polymer, coated white, pivotable through 360°. Replacement without tools.  
 2 projection lenses, continuously focusable. Ideal for short projection distances.  
 Framing attachment: stainless steel, black.  
 Aperture.



**AC002130**  
 Lens unit zoom spot  
 Polymer, white, rotatable through 360°. Replacement without tools.  
 Anti-reflective zoom lens made of optical polymer, infinitely variable focus.



**AC002230**  
 Lens unit wide framing  
 Aluminium/polymer, coated black, pivotable through 360°. Replacement without tools.  
 2 projection lenses, continuously focusable. Ideal for short projection distances.  
 Framing attachment: stainless steel, black.  
 Aperture.



**AC002121**  
 Lens unit zoom oval  
 Polymer, black lacquered, rotatable through 360°. Replacement without tools.  
 Anti-reflective zoom lens made of optical polymer, infinitely variable focus.



**AC006001**  
 Softening lens  
 Filter holder: polymer, black, rotatable through 360°. Replacement without tools.



**AC002132**  
 Lens unit zoom oval  
 Polymer, white, rotatable through 360°. Replacement without tools.  
 Anti-reflective zoom lens made of optical polymer, infinitely variable focus.

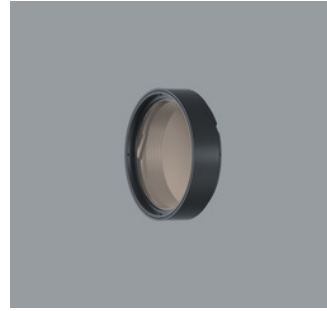


**AC006026**  
 Sculpture lens  
 Filter holder: polymer, black, rotatable through 360°. Replacement without tools.

## Accessories



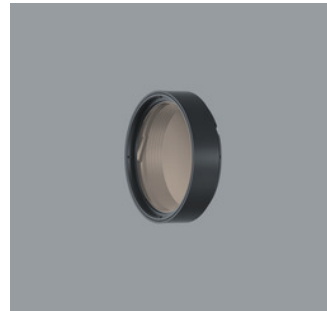
**AC006032**  
Cold Filter  
Filter holder: polymer, black, rotatable through 360°. Replacement without tools.



**AC006033**  
Marbled Meat Filter  
Filter holder: polymer, black, rotatable through 360°. Replacement without tools.



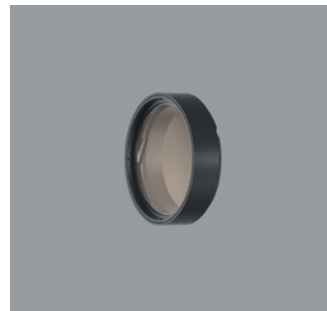
**AC006030**  
Cold Filter Plus  
Filter holder: polymer, black, rotatable through 360°. Replacement without tools.



**AC006031**  
Bread and Pastry Filter  
Filter holder: polymer, black, rotatable through 360°. Replacement without tools.



**AC006028**  
Warm Filter  
Filter holder: polymer, black, rotatable through 360°. Replacement without tools.



**AC006023**  
Blue Light Filter  
Filter holder: polymer, black, rotatable through 360°. Replacement without tools.



**AC006012**  
Warm Filter Plus  
Filter holder: polymer, black, rotatable through 360°. Replacement without tools.



**AC001003**  
Snoot  
Polymer, black, coated white on outside.



**AC006029**  
Skintone Filter  
Filter holder: polymer, black, rotatable through 360°. Replacement without tools.



**AC001011**  
Snoot  
Polymer, black.

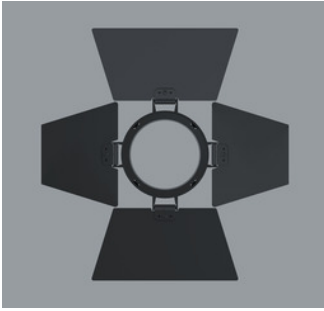


**AC006011**  
Fish Filter  
Filter holder: polymer, black, rotatable through 360°. Replacement without tools.

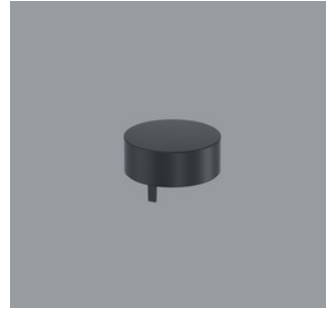


**AC004025**  
Honeycomb anti-glare screen  
Black

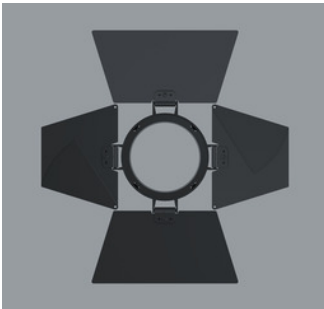
## Accessories



**AC005001**  
Barn doors 4-fold  
Aluminium, coated black.



**AC003001**  
Add-on Control Unit Casambi  
Bluetooth  
Polymer, black. Replacement without tools.  
Control via Casambi app (Android/iOS) with Bluetooth Low Energy (BLE)-capable mobile devices or "Casambi Ready" products.



**AC005003**  
Barn doors 8-fold  
Aluminium, coated black.



**AC003005**  
Add-on Control Unit Casambi  
Bluetooth  
Polymer, white. Replacement without tools.  
Control via Casambi app (Android/iOS) with Bluetooth Low Energy (BLE)-capable mobile devices or "Casambi Ready" products.



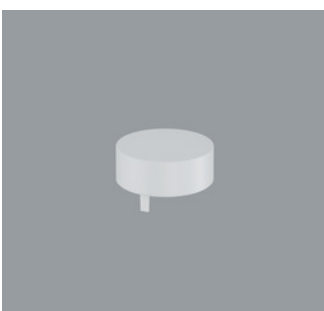
**AC003002**  
Add-on Control Unit On-board Dim  
Polymer, black. Replacement without tools.  
Rotary control for brightness regulation.



**AC003006**  
Add-on Control Unit On-board Dim  
Polymer, white. Replacement without tools.  
Rotary control for brightness regulation.



**AC003004**  
Add-on Control Unit Zigbee  
Polymer, black. Replacement without tools.  
Control via a Zigbee 3.0 compliant hub.



**AC003008**  
Add-on Control Unit Zigbee  
Polymer, white. Replacement without tools.  
Control via a Zigbee 3.0 compliant hub.