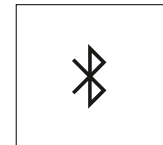
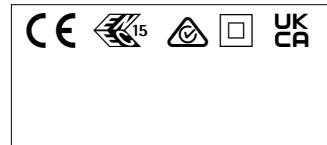
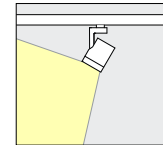
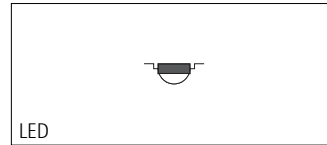
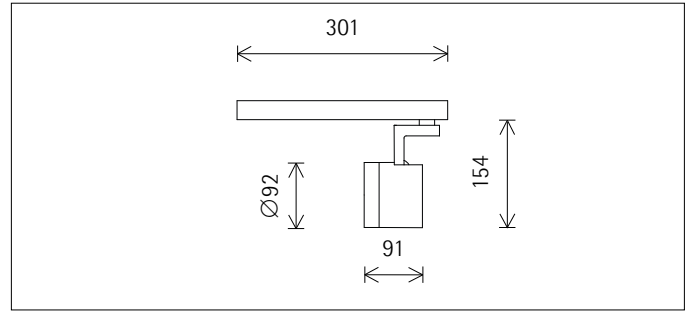
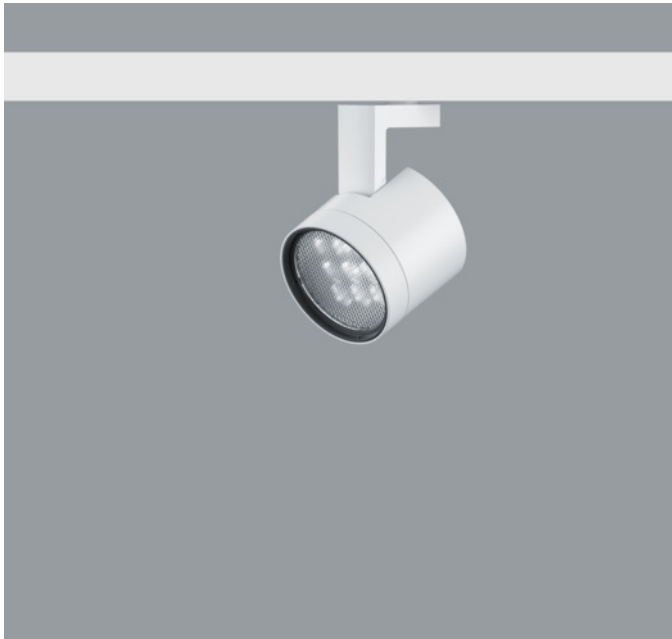


with Intrack adapter



**A1003818** White (RAL9002)  
 LED module: 18.1W 2157lm 4000K  
 neutral white  
 Casambi Bluetooth  
 Version 1  
 Size M  
 Spherolit lens, wallwash

**Product description**  
 Housing: cast aluminium, powder-coated; can be swivelled through 90° on the bracket. Upper cover made of polymer.  
 Bracket: cast aluminium/polymer, coated; can be rotated through 360° on the adapter.  
 Intrack adapter for ERCO 220-240V track: polymer, white.  
 ERCO control gear.  
 Add-on control unit: Casambi Bluetooth.  
 Lens unit: polymer, white, rotatable through 360°. Spherolit lens made of optical polymer.  
 LED module: high-power LEDs. Collimating lens made of optical polymer.  
 Control via Casambi app (Android/iOS) with Bluetooth Low Energy (BLE)-capable mobile devices or "Casambi Ready" products.  
 Protection Class II  
 Weight 0.60kg

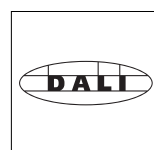
**Mean illuminance E<sub>n</sub> (wall)**

Angle of tilt 35°

Wall height (m)	4			
Offset from wall (m)	1.00	1.25	1.50	1.75
Luminaire spacing (m)	1.25	1.50	1.75	2.00
Illuminance E <sub>n</sub> (lx)	<b>289</b>	<b>241</b>	<b>210</b>	<b>180</b>

**Technical data**

Luminous flux of the luminaire	1537lm
Connected load	20.1W
Luminaire efficacy	76lm/W
Colour deviation	1.5 SDCM
Colour rendition index	CRI 92
Lumen maintenance (LED manufacturer specifications)	L90/B10 ≤50000h L90 ≤100000h
LED failure rate	0.1% ≤50000h
Dimming range	0.1%-100%
Dimming method	CCR
LMF	E
Standby power per control gear	0.4W
Luminaires per circuit breaker B16	163



**DALI controllable via accessory**  
 DALI Casambi Gateway for controlling Casambi Bluetooth via DALI.



**Mounting**  
 ERCO 3-circuit track  
 Hi-trac 3-circuit track

## Planning data

### Illuminance $E_n$ (lx)

Specifications:

Number of luminaires  $n > 5$

Wall height (m) 4.0

Angle of tilt 35°

Offset from wall (m)	1.00		1.00		1.25		1.25	
	1.25		1.50		1.50		1.75	
Luminaire spacing (m)	below the luminaire	between the luminaires	below the luminaire	between the luminaires	below the luminaire	between the luminaires	below the luminaire	between the luminaires
0.500	210	239	192	173	124	143	114	112
0.750	302	321	266	254	175	199	157	164
1.000	355	359	307	285	220	225	193	189
1.250	359	375	309	300	239	244	208	203
1.500	351	371	298	303	240	250	208	211
1.750	342	356	287	295	235	248	203	212
2.000	329	336	275	279	231	241	198	207
2.250	308	312	258	257	225	232	192	199
2.500	278	282	234	233	217	221	186	190
2.750	243	249	206	206	205	208	176	178
3.000	208	213	176	176	189	192	163	164
3.250	174	178	147	148	171	175	148	150
3.500	144	147	121	123	152	156	132	134

### Melanopic light effect

Art. no.	Spectrum	MR	MDER
A1003818 (direct)	4000K CRI 92	0.71	0.65

MR Melanopic ratio according to DIN SPEC 5031-100-100:2015-08: "amel;v"

MDER Melanopic daylight equivalent ratio according to DIN SPEC 5031-100-100:2015-08: "amel;D65;v"

Multiplying the melanopic ratio MR with the illuminance gives the equivalent melanopic illuminance EML (equivalent melanopic lux). The equivalent illuminance with daylight (D65) is obtained by multiplying the illuminance by the melanopic daylight equivalent ratio MDER.

Cleaning (a)	1				2				3			
	P	C	N	D	P	C	N	D	P	C	N	D
Ambient conditions	0.96	0.94	0.90	0.86	0.93	0.91	0.86	0.81	0.92	0.90	0.84	0.79
LMF	0.99	0.97	0.95	0.92	0.98	0.97	0.95	0.92	0.98	0.97	0.95	0.92
RSMF												
Hours of operation (h)	1000	5000	10000	20000	30000	40000	50000					
LLMF	1.00	0.99	0.98	0.96	0.94	0.92	0.90					
LSF	1	1	1	1	1	1	1					

MF	LMFxRSMF <sub>x</sub> LLMF <sub>x</sub> LSF
MF	Maintenance Factor
LMF	Luminaire Maintenance Factor
RSMF	Room Surface Maintenance Factor
LLMF	Lamp Lumens Maintenance Factor
LSF	Lamp Survival Factor
P	Room pure
C	Room clean
N	Room normal
D	Room dirty

### Data according to regulations

2019/2020/EU supplemented by 2021/341/EU and 2019/2015/EU supplemented by 2021/340/EU Energy Consumption Labelling Ordinance

This product contains a light source of efficiency class E

Due to thermal and photometric properties as well as to protect electronic components from ESD (electrostatic discharge) the light source cannot be changed by the customer.

ID EPREL: 697079

Model identifier: 3000059330

Download data sheets for control gear and disassembly instructions at [www.erco.com/slr](http://www.erco.com/slr)

## Planning data

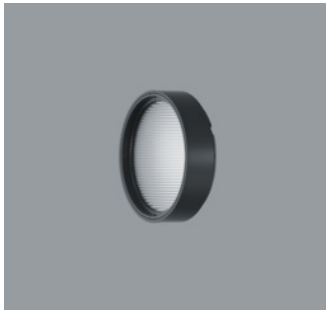
**Technical data in accordance with international norms and standards**

IEC 60598	Luminaires – Part 1+2: general requirements, specific requirements and tests
IEC 62031	LED modules for general lighting – safety requirements
IEC 62471	Photobiological safety of lamps and lamp systems
EN 13032-4	Light and lighting – measurement and representation of photometric data
CIE 13	Method of measuring and specifying colour rendering properties of light sources

All technical data is subject to industry-standard tolerances.  
Also see [www.erco.com/erco-led](http://www.erco.com/erco-led)

For explanations of the symbols and abbreviations used and other general information, see [www.erco.com/symbols](http://www.erco.com/symbols)

## Accessories



**AC002074**  
 Lens unit spot  
 Polymer, black lacquered, rotatable through 360°. Replacement without tools.  
 Spherolit lens made of optical polymer.



**AC002075**  
 Lens unit extra wide flood  
 Polymer, black lacquered, rotatable through 360°. Replacement without tools.  
 Spherolit lens made of optical polymer.



**AC002109**  
 Lens unit spot  
 Polymer, white, rotatable through 360°. Replacement without tools.  
 Spherolit lens made of optical polymer.



**AC002110**  
 Lens unit extra wide flood  
 Polymer, white, rotatable through 360°. Replacement without tools.  
 Spherolit lens made of optical polymer.



**AC002072**  
 Lens unit flood  
 Polymer, black lacquered, rotatable through 360°. Replacement without tools.  
 Spherolit lens made of optical polymer.



**AC002073**  
 Lens unit oval flood  
 Polymer, black lacquered, rotatable through 360°. Replacement without tools.  
 Spherolit lens made of optical polymer.



**AC002106**  
 Lens unit flood  
 Polymer, white, rotatable through 360°. Replacement without tools.  
 Spherolit lens made of optical polymer.



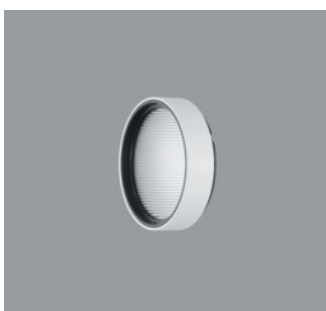
**AC002108**  
 Lens unit oval flood  
 Polymer, white, rotatable through 360°. Replacement without tools.  
 Spherolit lens made of optical polymer.



**AC002071**  
 Lens unit wide flood  
 Polymer, black lacquered, rotatable through 360°. Replacement without tools.  
 Spherolit lens made of optical polymer.



**AC002079**  
 Lens unit oval wide flood  
 Polymer, black lacquered, rotatable through 360°. Replacement without tools.  
 Spherolit lens made of optical polymer.

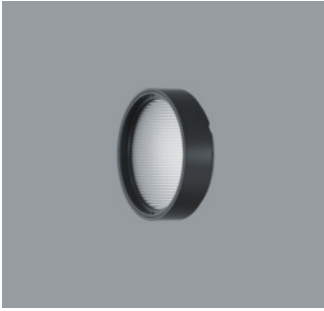


**AC002105**  
 Lens unit wide flood  
 Polymer, white, rotatable through 360°. Replacement without tools.  
 Spherolit lens made of optical polymer.



**AC002114**  
 Lens unit oval wide flood  
 Polymer, white, rotatable through 360°. Replacement without tools.  
 Spherolit lens made of optical polymer.

Accessories



**AC002077**  
 Lens unit wallwash  
 Polymer, black lacquered, rotatable through 360°. Replacement without tools.  
 Spherolit lens made of optical polymer.



**AC002257**  
 Lens unit narrow framing  
 Aluminium/polymer, coated white, pivotable through 360°. Replacement without tools.  
 Projection lens, continuously focusable. Ideal for long projection distances.  
 Framing attachment: stainless steel, black.  
 Aperture.



**AC002112**  
 Lens unit wallwash  
 Polymer, white, rotatable through 360°. Replacement without tools.  
 Spherolit lens made of optical polymer.



**AC002262**  
 Lens unit narrow framing  
 Aluminium/polymer, coated black, pivotable through 360°. Replacement without tools.  
 Projection lens, continuously focusable. Ideal for long projection distances.  
 Framing attachment: stainless steel, black.  
 Aperture.



**AC002119**  
 Lens unit zoom spot  
 Polymer, black lacquered, rotatable through 360°. Replacement without tools.  
 Anti-reflective zoom lens made of optical polymer, infinitely variable focus.



**AC002260**  
 Lens unit wide framing  
 Aluminium/polymer, coated white, pivotable through 360°. Replacement without tools.  
 2 projection lenses, continuously focusable. Ideal for short projection distances.  
 Framing attachment: stainless steel, black.  
 Aperture.



**AC002130**  
 Lens unit zoom spot  
 Polymer, white, rotatable through 360°. Replacement without tools.  
 Anti-reflective zoom lens made of optical polymer, infinitely variable focus.



**AC002265**  
 Lens unit wide framing  
 Aluminium/polymer, coated black, pivotable through 360°. Replacement without tools.  
 2 projection lenses, continuously focusable. Ideal for short projection distances.  
 Framing attachment: stainless steel, black.  
 Aperture.



**AC002121**  
 Lens unit zoom oval  
 Polymer, black lacquered, rotatable through 360°. Replacement without tools.  
 Anti-reflective zoom lens made of optical polymer, infinitely variable focus.



**AC006001**  
 Softening lens  
 Filter holder: polymer, black, rotatable through 360°. Replacement without tools.

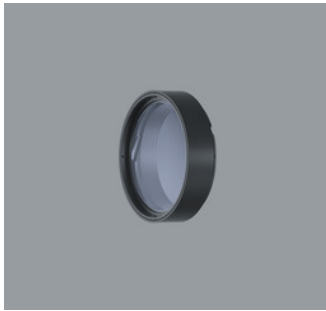


**AC002132**  
 Lens unit zoom oval  
 Polymer, white, rotatable through 360°. Replacement without tools.  
 Anti-reflective zoom lens made of optical polymer, infinitely variable focus.

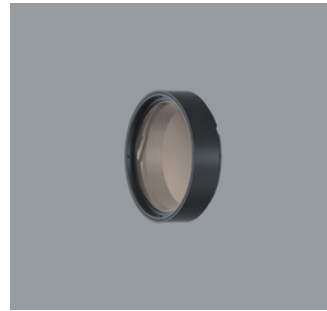


**AC006026**  
 Sculpture lens  
 Filter holder: polymer, black, rotatable through 360°. Replacement without tools.

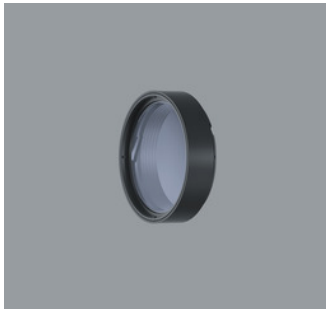
Accessories



**AC006032**  
Cold Filter  
Filter holder: polymer, black, rotatable through 360°. Replacement without tools.



**AC006033**  
Marbled Meat Filter  
Filter holder: polymer, black, rotatable through 360°. Replacement without tools.



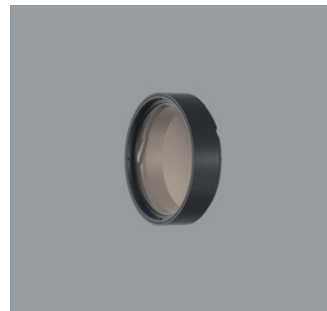
**AC006030**  
Cold Filter Plus  
Filter holder: polymer, black, rotatable through 360°. Replacement without tools.



**AC006031**  
Bread and Pastry Filter  
Filter holder: polymer, black, rotatable through 360°. Replacement without tools.



**AC006028**  
Warm Filter  
Filter holder: polymer, black, rotatable through 360°. Replacement without tools.



**AC006023**  
Blue Light Filter  
Filter holder: polymer, black, rotatable through 360°. Replacement without tools.



**AC006012**  
Warm Filter Plus  
Filter holder: polymer, black, rotatable through 360°. Replacement without tools.



**AC001005**  
Snoot  
Polymer, black.



**AC006029**  
Skintone Filter  
Filter holder: polymer, black, rotatable through 360°. Replacement without tools.



**AC001008**  
Snoot  
Polymer, black, coated white on outside.

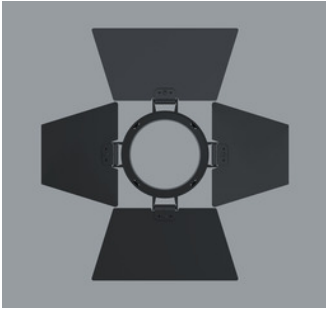


**AC006011**  
Fish Filter  
Filter holder: polymer, black, rotatable through 360°. Replacement without tools.

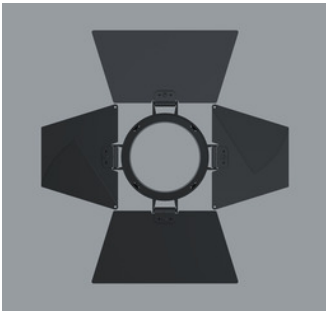


**AC004025**  
Honeycomb anti-glare screen  
Black

Accessories



**AC005001**  
Barn doors 4-fold  
Aluminium, coated black.



**AC005003**  
Barn doors 8-fold  
Aluminium, coated black.



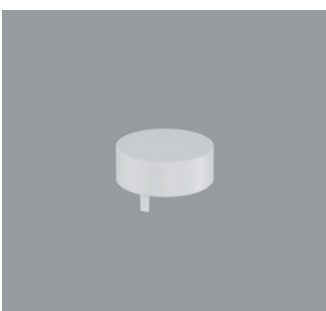
**AC003002**  
Add-on Control Unit On-board Dim  
Polymer, black. Replacement without tools.  
Rotary control for brightness regulation.



**AC003006**  
Add-on Control Unit On-board Dim  
Polymer, white. Replacement without tools.  
Rotary control for brightness regulation.



**AC003004**  
Add-on Control Unit Zigbee  
Polymer, black. Replacement without tools.  
Control via a Zigbee 3.0 compliant hub.



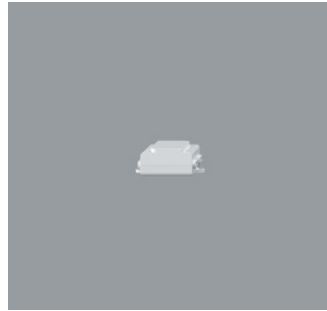
**AC003008**  
Add-on Control Unit Zigbee  
Polymer, white. Replacement without tools.  
Control via a Zigbee 3.0 compliant hub.



**AC003001**  
Add-on Control Unit Casambi Bluetooth  
Polymer, black. Replacement without tools.  
Control via Casambi app (Android/iOS) with Bluetooth Low Energy (BLE)-capable mobile devices or "Casambi Ready" products.

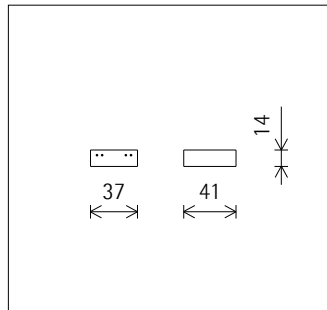


**AC003005**  
Add-on Control Unit Casambi Bluetooth  
Polymer, white. Replacement without tools.  
Control via Casambi app (Android/iOS) with Bluetooth Low Energy (BLE)-capable mobile devices or "Casambi Ready" products.



**AC007001**  
DALI Casambi Gateway  
Enables DALI systems to be connected to luminaires, sensors and control units with Casambi Bluetooth. The gateway can only be operated in Evolution networks. Power is supplied exclusively via the DALI bus. Connection via two lines which must be designed for mains voltage. The gateway requires no DALI addresses, the devices appear as non-configured devices in the DALI system. Addressing/commissioning is performed via the DALI control. It can individually control 64 devices, and via the broadcast command up to 249 devices.

CE



**55248.000**  
ERCO Casambi motion detector with light sensor for ERCO 220-240V track. Setup via Casambi app (Android/iOS) with Bluetooth Low Energy (BLE)-capable mobile devices. Use for daylight-dependent light control with or without motion detector. Detection range of infrared (PIR) sensor 100°/ 5m. At 3m room height, this is a circle with diameter of approx. 7m. 3-phase adapter for ERCO 220-240V track: plastic, white.  
White  
Weight 0.18kg  
CE, RoHS, WEEE, REACH, PSE, UKCA

## Accessories

**55249.000**

ERCO Casambi motion detector with light sensor for ERCO 220-240V track.

Setup via Casambi app (Android/iOS) with Bluetooth Low Energy (BLE)-capable mobile devices.

Use for daylight-dependent light control with or without motion detector.

Detection range of infrared (PIR) sensor 100°/ 5m. At 3m room height, this is a circle with diameter of approx. 7m.

3-phase adapter for ERCO 220-240V track: polymer, black.

Black

Weight 0.18kg

