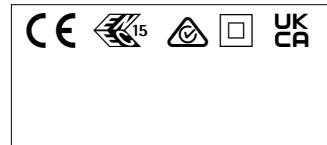
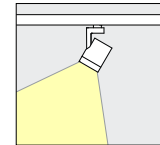
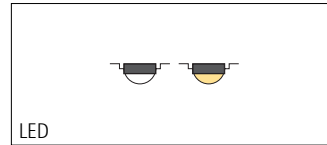
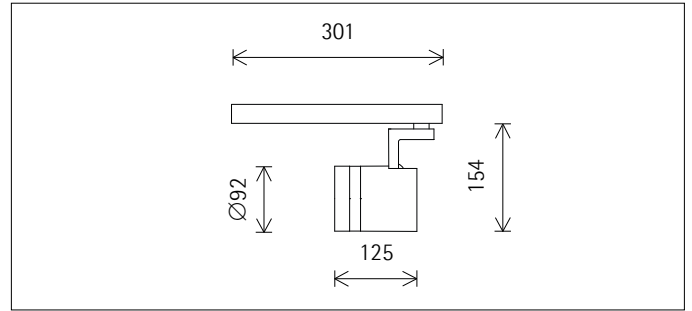
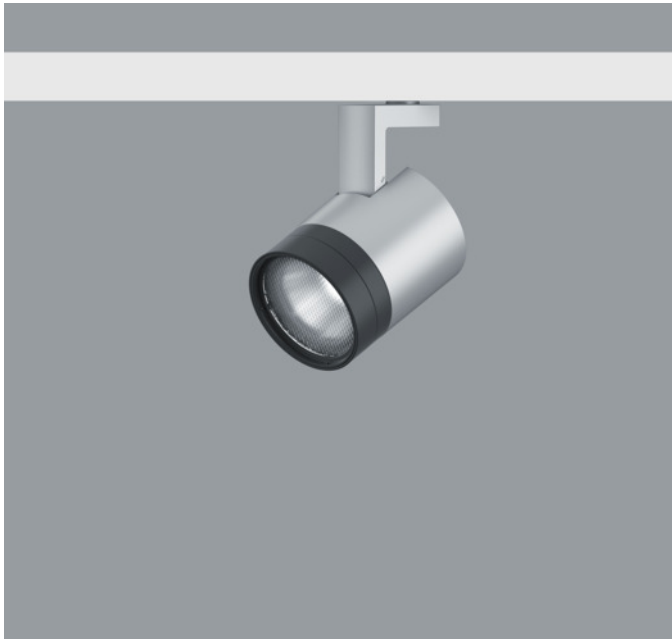
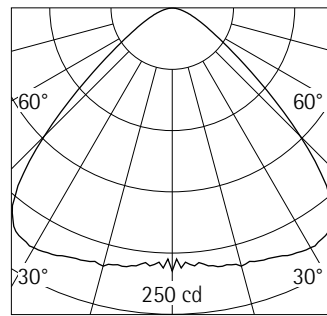


with Intrack adapter



A1006659 Silver
 LED module: 12.6W 1335lm 2700 - 7500K Tunable white
 Multi Dim
 Version 1
 Size M
 Spherolit lens, extra wide flood

Product description
 Housing: cast aluminium, powder-coated; can be swivelled through 90° on the bracket. Upper cover made of polymer.
 Bracket: cast aluminium/polymer, coated; can be rotated through 360° on the adapter.
 Intrack adapter for ERCO 220-240V track: polymer, black.
 ERCO Multi Dim control gear: DALI dimmable, Push Dim, phase dimmable.
 Lens unit: polymer, black. Spherolit lens made of optical polymer.
 LED module: high-power LEDs. Color mixer. Collimating lens made of optical polymer.
 Dimming possible with external dimmers (phase and universal dimmers) or standard push-buttons (Push Dim).
 Protection Class II
 Weight 0.74kg



| h(m) | E(lx) | D(m) |
|------|-------|-------|
| | | 96° |
| 1 | 215 | 2.22 |
| 2 | 54 | 4.44 |
| 3 | 24 | 6.66 |
| 4 | 13 | 8.88 |
| 5 | 9 | 11.11 |

Technical data

| | |
|---|-------------------------------------|
| Luminous flux of the luminaire | 524lm |
| Connected load | 16.9W |
| Luminaire efficacy | 31lm/W |
| Colour deviation | 2.0 SDCM |
| Colour rendition index | CRI 92 |
| Lumen maintenance (LED manufacturer specifications) | L90/B10 ≤50000h L80/B50 ≤100000h |
| LED failure rate | 0.1% ≤50000h |
| Dimming range | 0.1%-100% |
| Dimming method | CCR |
| LMF | E |
| Standby power per control gear | 0.4W |
| Luminaires per circuit breaker B16 | 213 |



Mounting
 ERCO track
 Hi-trac track

For your regional contact in the ERCO
 Sales network click here
www.erco.com/contact

Technical Region: 220-240V 50/60Hz
 We reserve the right to make technical and design changes.
 Edition: 28.01.2023
 Current version under
www.erco.com/A1006659

Planning data

Melanopic light effect

| Art. no. | Spectrum | MR | MDER |
|-------------------|--------------|------|------|
| A1006659 (direct) | 2700K CRI 92 | 0.49 | 0.44 |
| | 7500K CRI 92 | 1.50 | 1.36 |

MR Melanopic ratio according to DIN SPEC 5031-100-100:2015-08: "amel;v"

MDER Melanopic daylight equivalent ratio according to DIN SPEC 5031-100-100:2015-08: "amel;D65;v"

Multiplying the melanopic ratio MR with the illuminance gives the equivalent melanopic illuminance EML (equivalent melanopic lux). The equivalent illuminance with daylight (D65) is obtained by multiplying the illuminance by the melanopic daylight equivalent ratio MDER.

| Cleaning (a) | 1 | | | | 2 | | | | 3 | | | |
|------------------------|------|------|-------|-------|-------|-------|-------|------|------|------|------|------|
| | P | C | N | D | P | C | N | D | P | C | N | D |
| LMF | 0.96 | 0.94 | 0.90 | 0.86 | 0.93 | 0.91 | 0.86 | 0.81 | 0.92 | 0.90 | 0.84 | 0.79 |
| RSMF | 0.99 | 0.97 | 0.95 | 0.92 | 0.98 | 0.97 | 0.95 | 0.92 | 0.98 | 0.97 | 0.95 | 0.92 |
| Hours of operation (h) | 1000 | 5000 | 10000 | 20000 | 30000 | 40000 | 50000 | | | | | |
| LLMF | 1.00 | 0.99 | 0.98 | 0.96 | 0.94 | 0.92 | 0.90 | | | | | |
| LSF | 1 | 1 | 1 | 1 | 1 | 1 | 1 | | | | | |

| | |
|------|---------------------------------|
| MF | LMFxRSMFxLLMFxLSF |
| MF | Maintenance Factor |
| LMF | Luminaire Maintenance Factor |
| RSMF | Room Surface Maintenance Factor |
| LLMF | Lamp Lumens Maintenance Factor |
| LSF | Lamp Survival Factor |
| P | Room pure |
| C | Room clean |
| N | Room normal |
| D | Room dirty |

Data according to regulations

2019/2020/EU supplemented by 2021/341/EU and 2019/2015/EU supplemented by 2021/340/EU Energy Consumption Labelling Ordinance

This product contains a light source of efficiency class E
 Due to thermal and photometric properties as well as to protect electronic components from ESD (electrostatic discharge) the light source cannot be changed by the customer.

ID EPREL: 697056
 Model identifier: 3000057462
 Download data sheets for control gear and disassembly instructions at www.ercos.com/slr

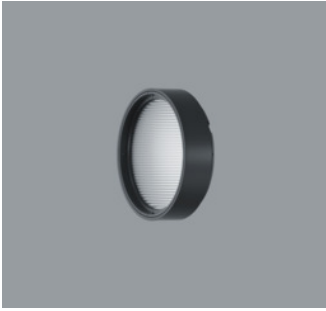
Technical data in accordance with international norms and standards

| | |
|------------|---|
| IEC 60598 | Luminaires – Part 1+2: general requirements, specific requirements and tests |
| IEC 62031 | LED modules for general lighting – safety requirements |
| IEC 62471 | Photobiological safety of lamps and lamp systems |
| EN 13032-4 | Light and lighting – measurement and representation of photometric data |
| CIE 13 | Method of measuring and specifying colour rendering properties of light sources |

All technical data is subject to industry-standard tolerances.
 Also see www.ercos.com/ercos-led

For explanations of the symbols and abbreviations used and other general information, see www.ercos.com/symbols

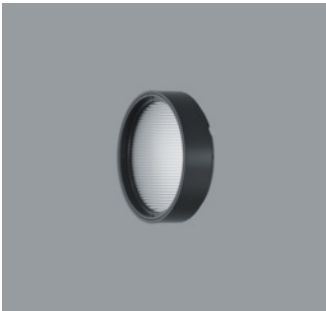
Accessories



AC002074
 Lens unit spot
 Polymer, black lacquered, rotatable through 360°. Replacement without tools.
 Spherolit lens made of optical polymer.



AC002077
 Lens unit wallwash
 Polymer, black lacquered, rotatable through 360°. Replacement without tools.
 Spherolit lens made of optical polymer.



AC002072
 Lens unit flood
 Polymer, black lacquered, rotatable through 360°. Replacement without tools.
 Spherolit lens made of optical polymer.



AC002119
 Lens unit zoom spot
 Polymer, black lacquered, rotatable through 360°. Replacement without tools.
 Anti-reflective zoom lens made of optical polymer, infinitely variable focus.



AC002071
 Lens unit wide flood
 Polymer, black lacquered, rotatable through 360°. Replacement without tools.
 Spherolit lens made of optical polymer.



AC002121
 Lens unit zoom oval
 Polymer, black lacquered, rotatable through 360°. Replacement without tools.
 Anti-reflective zoom lens made of optical polymer, infinitely variable focus.



AC002075
 Lens unit extra wide flood
 Polymer, black lacquered, rotatable through 360°. Replacement without tools.
 Spherolit lens made of optical polymer.



AC002234
 Lens unit narrow framing
 Aluminium/polymer, coated black, pivotable through 360°. Replacement without tools.
 Projection lens, continuously focusable. Ideal for long projection distances.
 Framing attachment: stainless steel, black.
 Aperture.



AC002073
 Lens unit oval flood
 Polymer, black lacquered, rotatable through 360°. Replacement without tools.
 Spherolit lens made of optical polymer.



AC002230
 Lens unit wide framing
 Aluminium/polymer, coated black, pivotable through 360°. Replacement without tools.
 2 projection lenses, continuously focusable. Ideal for short projection distances.
 Framing attachment: stainless steel, black.
 Aperture.

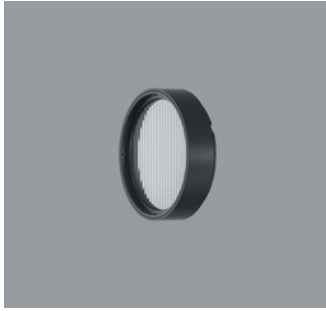


AC002079
 Lens unit oval wide flood
 Polymer, black lacquered, rotatable through 360°. Replacement without tools.
 Spherolit lens made of optical polymer.



AC006001
 Softening lens
 Filter holder: polymer, black, rotatable through 360°. Replacement without tools.

Accessories



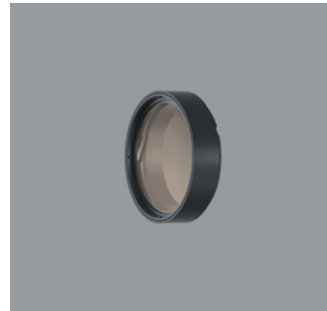
AC006026
Sculpture lens
Filter holder: polymer, black, rotatable through 360°. Replacement without tools.



AC006011
Fish Filter
Filter holder: polymer, black, rotatable through 360°. Replacement without tools.



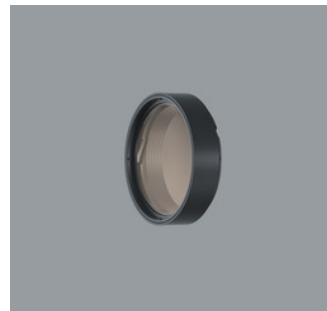
AC006032
Cold Filter
Filter holder: polymer, black, rotatable through 360°. Replacement without tools.



AC006033
Marbled Meat Filter
Filter holder: polymer, black, rotatable through 360°. Replacement without tools.



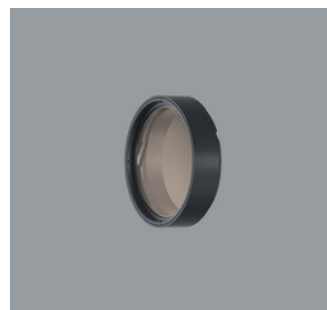
AC006030
Cold Filter Plus
Filter holder: polymer, black, rotatable through 360°. Replacement without tools.



AC006031
Bread and Pastry Filter
Filter holder: polymer, black, rotatable through 360°. Replacement without tools.



AC006028
Warm Filter
Filter holder: polymer, black, rotatable through 360°. Replacement without tools.



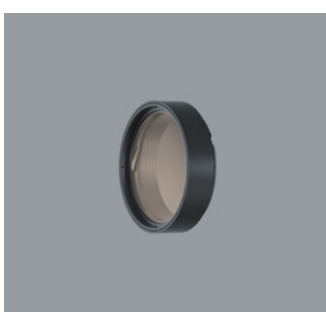
AC006023
Blue Light Filter
Filter holder: polymer, black, rotatable through 360°. Replacement without tools.



AC006012
Warm Filter Plus
Filter holder: polymer, black, rotatable through 360°. Replacement without tools.



AC001011
Snoot
Polymer, black.

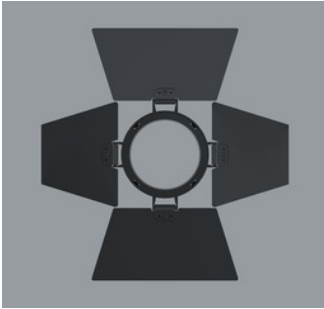


AC006029
Skintone Filter
Filter holder: polymer, black, rotatable through 360°. Replacement without tools.

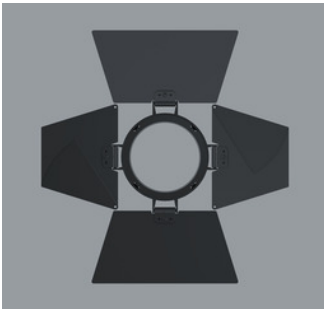


AC004025
Honeycomb anti-glare screen
Black

Accessories



AC005001
Barn doors 4-fold
Aluminium, coated black.



AC005003
Barn doors 8-fold
Aluminium, coated black.



AC003002
Add-on Control Unit On-board Dim
Polymer, black. Replacement without tools.
Rotary control for brightness regulation.



AC003004
Add-on Control Unit Zigbee
Polymer, black. Replacement without tools.
Control via a Zigbee 3.0 compliant hub.



AC003001
Add-on Control Unit Casambi
Bluetooth
Polymer, black. Replacement without tools.
Control via Casambi app (Android/iOS) with Bluetooth Low Energy (BLE)-capable mobile devices or "Casambi Ready" products.