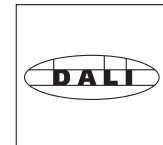
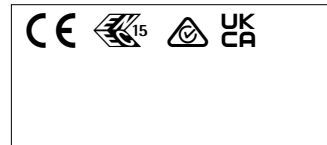
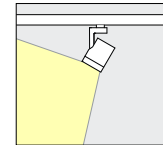


LED



**A1032215** White (RAL9002)  
 LED module: 25.1W 2797lm 3000K  
 warm white  
 DALI-2  
 Version 1  
 Size L  
 Spherolit lens, wallwash

**Product description**  
 Housing: cast aluminium, powder-coated; can be swivelled through 90° on the bracket. Upper cover made of polymer.  
 Bracket: cast aluminium/polymer, coated; can be rotated through 360° on the adapter.  
 DALI adapter for ERCO DALI 220-240V track: polymer, white.  
 DALI control gear.  
 Lens unit: polymer, white, rotatable through 360°. Spherolit lens made of optical polymer.  
 LED module: high-power LEDs. Collimating lens made of optical polymer.  
 For ceiling mounting only.  
 Install the luminaire out of people's normal reach.  
 Weight 1.43kg

**Mean illuminance E<sub>n</sub> (wall)**

Angle of tilt 35°	6			
Wall height (m)	2.00	2.00	2.00	2.50
Offset from wall (m)	2.00	2.50	3.00	3.50
Luminaire spacing (m)	2.00	2.50	3.00	3.50
Illuminance E <sub>n</sub> (lx)	<b>136</b>	<b>109</b>	<b>91</b>	<b>65</b>

**Technical data**

Luminous flux of the luminaire	2106lm
Connected load	27.5W
Luminaire efficacy	77lm/W
Colour deviation	1.5 SDCM
Colour rendition index	CRI 92
Lumen maintenance (LED manufacturer specifications)	L90/B10 ≤50000h L90 ≤100000h
LED failure rate	0.1% ≤50000h
Dimming range	1%-100%
Dimming method	CCR
LMF	E
Standby power per control gear	0.5W
Luminaires per circuit breaker B16	50



**Mounting**  
 ERCO DALI track  
 Hi-trac DALI track  
 DALI singlet

For your regional contact in the ERCO  
 Sales network click here  
[www.ercos.com/contact](http://www.ercos.com/contact)

Technical Region: 220-240V 50/60Hz  
 We reserve the right to make technical and design changes.  
 Edition: 28.01.2023  
 Current version under  
[www.ercos.com/A1032215](http://www.ercos.com/A1032215)

## Planning data

### Illuminance $E_n$ (lx)

Specifications:

Number of luminaires  $n > 5$

Wall height (m) 6.0

Angle of tilt 35°

	2.00		2.50		3.00		3.50	
	below the luminaire	between the luminaires	below the luminaire	between the luminaires	below the luminaire	between the luminaires	below the luminaire	between the luminaires
Offset from wall (m)	2.00		2.00		2.00		2.50	
Luminaire spacing (m)	2.00		2.50		3.00		3.50	
0.500	65	79	54	60	50	41	30	29
1.000	113	129	91	103	82	78	49	49
1.500	148	152	117	122	102	97	62	64
2.000	157	163	125	131	108	104	70	70
2.500	156	162	124	132	106	107	72	73
3.000	153	157	121	128	102	106	72	75
3.500	148	151	117	122	99	101	70	74
4.000	140	142	112	115	94	94	68	72
4.500	127	130	102	105	86	86	66	69
5.000	112	114	90	92	76	76	63	65
5.500	96	97	77	79	65	65	59	60

### Melanopic light effect

Art. no.	Spectrum	MR	MDER
A1032215 (direct)	3000K CRI 92	0.54	0.48

MR Melanopic ratio according to DIN SPEC 5031-100-100:2015-08: "amel;v"

MDER Melanopic daylight equivalent ratio according to DIN SPEC 5031-100-100:2015-08: "amel;D65;v"

Multiplying the melanopic ratio MR with the illuminance gives the equivalent melanopic illuminance EML (equivalent melanopic lux). The equivalent illuminance with daylight (D65) is obtained by multiplying the illuminance by the melanopic daylight equivalent ratio MDER.

Cleaning (a)	1				2				3			
	P	C	N	D	P	C	N	D	P	C	N	D
LMF	0.96	0.94	0.90	0.86	0.93	0.91	0.86	0.81	0.92	0.90	0.84	0.79
RSMF	0.99	0.97	0.95	0.92	0.98	0.97	0.95	0.92	0.98	0.97	0.95	0.92
Hours of operation (h)	1000	5000	10000	20000	30000	40000	50000					
LLMF	1.00	0.99	0.98	0.96	0.94	0.92	0.90					
LSF	1	1	1	1	1	1	1					

MF	LMFxRSMFxLLMFxLSF
MF	Maintenance Factor
LMF	Luminaire Maintenance Factor
RSMF	Room Surface Maintenance Factor
LLMF	Lamp Lumens Maintenance Factor
LSF	Lamp Survival Factor
P	Room pure
C	Room clean
N	Room normal
D	Room dirty

### Data according to regulations

2019/2020/EU supplemented by 2021/341/EU and 2019/2015/EU supplemented by 2021/340/EU Energy Consumption Labelling Ordinance

This product contains a light source of efficiency class E  
Due to thermal and photometric properties as well as to protect electronic components from ESD (electrostatic discharge) the light source cannot be changed by the customer.

ID EPREL: 985720

Model identifier: 3000060580

Download data sheets for control gear and disassembly instructions at [www.erco.com/slr](http://www.erco.com/slr)

## Planning data

**Technical data in accordance with international norms and standards**

IEC 60598	Luminaires – Part 1+2: general requirements, specific requirements and tests
IEC 62031	LED modules for general lighting – safety requirements
IEC 62471	Photobiological safety of lamps and lamp systems
EN 13032-4	Light and lighting – measurement and representation of photometric data
CIE 13	Method of measuring and specifying colour rendering properties of light sources

All technical data is subject to industry-standard tolerances.  
Also see [www.erco.com/erco-led](http://www.erco.com/erco-led)

For explanations of the symbols and abbreviations used and other general information, see [www.erco.com/symbols](http://www.erco.com/symbols)

## Accessories



**AC002145**  
 Lens unit spot  
 Polymer, white, rotatable through 360°. Replacement without tools.  
 Spherolit lens made of optical polymer.



**AC002133**  
 Lens unit extra wide flood  
 Polymer, white, rotatable through 360°. Replacement without tools.  
 Spherolit lens made of optical polymer.



**AC002176**  
 Lens unit spot  
 Polymer, black, rotatable through 360°. Replacement without tools.  
 Spherolit lens made of optical polymer.



**AC002164**  
 Lens unit extra wide flood  
 Polymer, black, rotatable through 360°. Replacement without tools.  
 Spherolit lens made of optical polymer.



**AC002138**  
 Lens unit flood  
 Polymer, white, rotatable through 360°. Replacement without tools.  
 Spherolit lens made of optical polymer.



**AC002134**  
 Lens unit oval flood  
 Polymer, white, rotatable through 360°. Replacement without tools.  
 Anti-reflective Spherolit lens made of optical polymer.



**AC002169**  
 Lens unit flood  
 Polymer, black, rotatable through 360°. Replacement without tools.  
 Spherolit lens made of optical polymer.



**AC002165**  
 Lens unit oval flood  
 Polymer, black, rotatable through 360°. Replacement without tools.  
 Anti-reflective Spherolit lens made of optical polymer.



**AC002136**  
 Lens unit wide flood  
 Polymer, white, rotatable through 360°. Replacement without tools.  
 Spherolit lens made of optical polymer.



**AC002137**  
 Lens unit oval wide flood  
 Polymer, white, rotatable through 360°. Replacement without tools.  
 Anti-reflective Spherolit lens made of optical polymer.



**AC002167**  
 Lens unit wide flood  
 Polymer, black, rotatable through 360°. Replacement without tools.  
 Spherolit lens made of optical polymer.



**AC002168**  
 Lens unit oval wide flood  
 Polymer, black, rotatable through 360°. Replacement without tools.  
 Anti-reflective Spherolit lens made of optical polymer.

Accessories



**AC002135**  
 Lens unit wallwash  
 Polymer, white, rotatable through 360°. Replacement without tools.  
 Anti-reflective Spherolit lens made of optical polymer.



**AC002255**  
 Lens unit narrow framing  
 Aluminium/polymer, coated black, pivotable through 360°. Replacement without tools.  
 Projection lens, continuously focusable. Ideal for long projection distances.  
 Framing attachment: stainless steel, black.  
 Aperture.



**AC002166**  
 Lens unit wallwash  
 Polymer, black, rotatable through 360°. Replacement without tools.  
 Anti-reflective Spherolit lens made of optical polymer.



**AC002256**  
 Lens unit narrow framing  
 Aluminium/polymer, coated white, pivotable through 360°. Replacement without tools.  
 Projection lens, continuously focusable. Ideal for long projection distances.  
 Framing attachment: stainless steel, black.  
 Aperture.



**AC002148**  
 Lens unit zoom spot  
 Polymer, white, rotatable through 360°. Replacement without tools.  
 Anti-reflective zoom lens made of optical polymer, infinitely variable focus.



**AC002259**  
 Lens unit wide framing  
 Aluminium/polymer, coated white, pivotable through 360°. Replacement without tools.  
 2 projection lenses, continuously focusable. Ideal for short projection distances.  
 Framing attachment: stainless steel, black.  
 Aperture.



**AC002179**  
 Lens unit zoom spot  
 Polymer, black, rotatable through 360°. Replacement without tools.  
 Anti-reflective zoom lens made of optical polymer, infinitely variable focus.



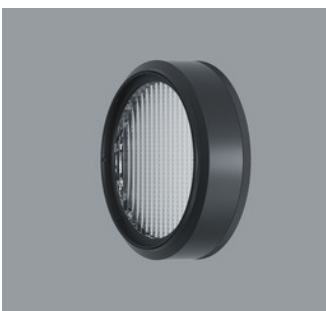
**AC002264**  
 Lens unit wide framing  
 Aluminium/polymer, coated black, pivotable through 360°. Replacement without tools.  
 2 projection lenses, continuously focusable. Ideal for short projection distances.  
 Framing attachment: stainless steel, black.  
 Aperture.



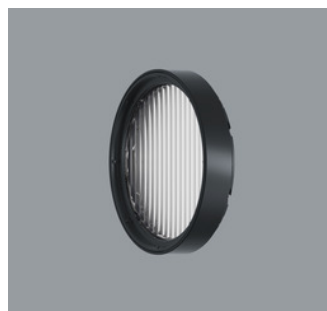
**AC002147**  
 Lens unit zoom oval  
 Polymer, white, rotatable through 360°. Replacement without tools.  
 Anti-reflective zoom lens made of optical polymer, infinitely variable focus.



**AC006035**  
 Softening lens  
 Filter holder: polymer, black, rotatable through 360°. Replacement without tools.

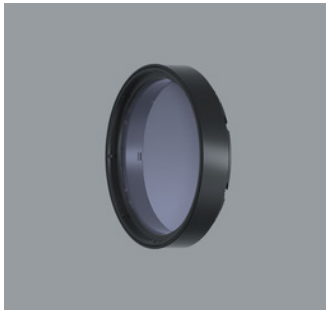


**AC002178**  
 Lens unit zoom oval  
 Polymer, black, rotatable through 360°. Replacement without tools.  
 Anti-reflective zoom lens made of optical polymer, infinitely variable focus.



**AC006043**  
 Sculpture lens  
 Filter holder: polymer, black, rotatable through 360°. Replacement without tools.

Accessories



**AC006038**  
Cold Filter  
Filter holder: polymer, black, rotatable through 360°. Replacement without tools.



**AC001018**  
Snoot  
Polymer, black.



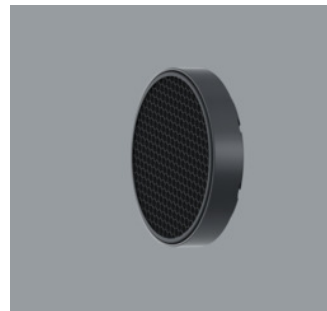
**AC006036**  
Cold Filter Plus  
Filter holder: polymer, black, rotatable through 360°. Replacement without tools.



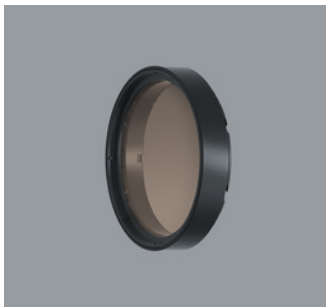
**AC001020**  
Snoot  
Polymer, black, coated white on outside.



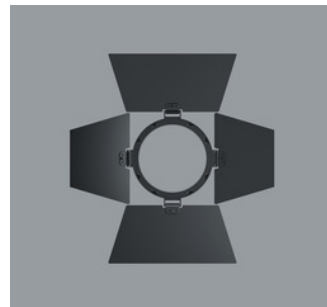
**AC006049**  
Warm Filter  
Filter holder: polymer, black, rotatable through 360°. Replacement without tools.



**AC004026**  
Honeycomb anti-glare screen  
Aluminium, powder-coated black, polymer outer.



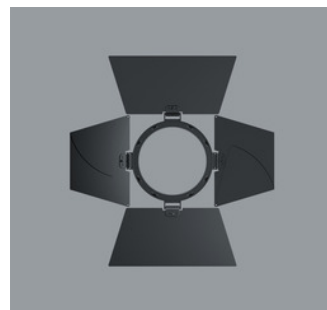
**AC006048**  
Warm Filter Plus  
Filter holder: polymer, black, rotatable through 360°. Replacement without tools.



**AC005005**  
Barn doors 4-fold  
Aluminium, coated black.



**AC006039**  
Skintone Filter  
Filter holder: polymer, black, rotatable through 360°. Replacement without tools.



**AC005007**  
Barn doors 8-fold  
Aluminium, coated black.



**AC006037**  
Blue Light Filter  
Filter holder: polymer, black, rotatable through 360°. Replacement without tools.