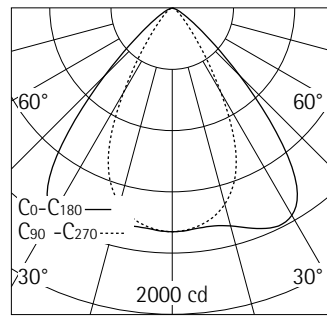


A1035869 Black
 LED module: 25.1W 2797lm 3000K
 warm white
 Casambi Bluetooth
 Version 1
 Size L
 Spherolit lens oval wide flood

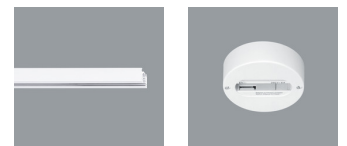
Product description
 Housing: cast aluminium, powder-coated; can be swivelled through 90° on the bracket. Upper cover made of polymer.
 Bracket: cast aluminium/polymer, coated; can be rotated through 360° on the adapter.
 3-phase adapter for ERCO 220-240V track: polymer, black.
 Casambi control gear.
 Lens unit: polymer, black, rotatable through 360°. Spherolit lens made of optical polymer.
 LED module: high-power LEDs. Collimating lens made of optical polymer.
 For ceiling mounting only.
 Install the luminaire out of people's normal reach.
 Control via Casambi app (Android/iOS) with Bluetooth Low Energy (BLE)-capable mobile devices or "Casambi Ready" products.
 Weight 1.30kg



h(m)	E(lx)	D(m)	
		C0	C90
		86°	57°
1	1461	1.87	1.09
2	365	3.73	2.17
3	162	5.60	3.26
4	91	7.46	4.34
5	58	9.33	5.43

Technical data

Luminous flux of the luminaire	2096lm
Connected load	28.6W
Luminaire efficacy	73lm/W
Colour deviation	1.5 SDCM
Colour rendition index	CRI 92
Lumen maintenance (LED manufacturer specifications)	L90/B10 ≤50000h L90 ≤100000h
LED failure rate	0.1% ≤50000h
Dimming range	1%-100%
Dimming method	CCR
LMF	E
Standby power per control gear	0.5W
Luminaires per circuit breaker B16	50



Mounting
 ERCO 3-circuit track
 Hi-trac 3-circuit track
 1-circuit singlet

For your regional contact in the ERCO
 Sales network click here
www.erco.com/contact

Technical Region: 220-240V 50/60Hz
 We reserve the right to make technical and design changes.
 Edition: 28.01.2023
 Current version under
www.erco.com/A1035869

Planning data

Melanopic light effect

Art. no.	Spectrum	MR	MDER
A1035869 (direct)	3000K CRI 92	0.54	0.48

MR Melanopic ratio according to DIN SPEC 5031-100-100:2015-08: "amel;v"

MDER Melanopic daylight equivalent ratio according to DIN SPEC 5031-100-100:2015-08: "amel;D65;v"

Multiplying the melanopic ratio MR with the illuminance gives the equivalent melanopic illuminance EML (equivalent melanopic lux). The equivalent illuminance with daylight (D65) is obtained by multiplying the illuminance by the melanopic daylight equivalent ratio MDER.

Cleaning (a)	1				2				3			
	P	C	N	D	P	C	N	D	P	C	N	D
LMF	0.96	0.94	0.90	0.86	0.93	0.91	0.86	0.81	0.92	0.90	0.84	0.79
RSMF	0.99	0.97	0.95	0.92	0.98	0.97	0.95	0.92	0.98	0.97	0.95	0.92

Hours of operation (h)	1000	5000	10000	20000	30000	40000	50000
LLMF	1.00	0.99	0.98	0.96	0.94	0.92	0.90
LSF	1	1	1	1	1	1	1

MF	LMF x RSMF x LLMF x LSF
MF	Maintenance Factor
LMF	Luminaire Maintenance Factor
RSMF	Room Surface Maintenance Factor
LLMF	Lamp Lumens Maintenance Factor
LSF	Lamp Survival Factor
P	Room pure
C	Room clean
N	Room normal
D	Room dirty

Data according to regulations

2019/2020/EU supplemented by 2021/341/EU and 2019/2015/EU supplemented by 2021/340/EU Energy Consumption Labelling Ordinance

This product contains a light source of efficiency class E
 Due to thermal and photometric properties as well as to protect electronic components from ESD (electrostatic discharge) the light source cannot be changed by the customer.

ID EPREL: 985720
 Model identifier: 3000060580
 Download data sheets for control gear and disassembly instructions at www.erco.com/slr

Technical data in accordance with international norms and standards

IEC 60598	Luminaires – Part 1+2: general requirements, specific requirements and tests
IEC 62031	LED modules for general lighting – safety requirements
IEC 62471	Photobiological safety of lamps and lamp systems
EN 13032-4	Light and lighting – measurement and representation of photometric data
CIE 13	Method of measuring and specifying colour rendering properties of light sources

All technical data is subject to industry-standard tolerances.
 Also see www.erco.com/erco-led

For explanations of the symbols and abbreviations used and other general information, see www.erco.com/symbols

Accessories



AC002176
 Lens unit spot
 Polymer, black, rotatable through 360°. Replacement without tools.
 Spherolit lens made of optical polymer.



AC002166
 Lens unit wallwash
 Polymer, black, rotatable through 360°. Replacement without tools.
 Anti-reflective Spherolit lens made of optical polymer.



AC002169
 Lens unit flood
 Polymer, black, rotatable through 360°. Replacement without tools.
 Spherolit lens made of optical polymer.



AC002179
 Lens unit zoom spot
 Polymer, black, rotatable through 360°. Replacement without tools.
 Anti-reflective zoom lens made of optical polymer, infinitely variable focus.



AC002167
 Lens unit wide flood
 Polymer, black, rotatable through 360°. Replacement without tools.
 Spherolit lens made of optical polymer.



AC002178
 Lens unit zoom oval
 Polymer, black, rotatable through 360°. Replacement without tools.
 Anti-reflective zoom lens made of optical polymer, infinitely variable focus.



AC002164
 Lens unit extra wide flood
 Polymer, black, rotatable through 360°. Replacement without tools.
 Spherolit lens made of optical polymer.



AC002255
 Lens unit narrow framing
 Aluminium/polymer, coated black, pivotable through 360°. Replacement without tools.
 Projection lens, continuously focusable. Ideal for long projection distances.
 Framing attachment: stainless steel, black.
 Aperture.



AC002165
 Lens unit oval flood
 Polymer, black, rotatable through 360°. Replacement without tools.
 Anti-reflective Spherolit lens made of optical polymer.



AC002264
 Lens unit wide framing
 Aluminium/polymer, coated black, pivotable through 360°. Replacement without tools.
 2 projection lenses, continuously focusable. Ideal for short projection distances.
 Framing attachment: stainless steel, black.
 Aperture.

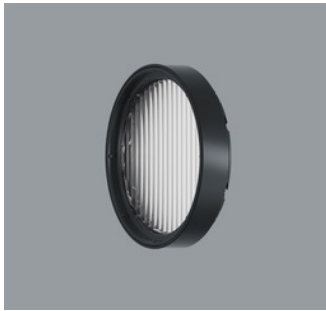


AC002168
 Lens unit oval wide flood
 Polymer, black, rotatable through 360°. Replacement without tools.
 Anti-reflective Spherolit lens made of optical polymer.

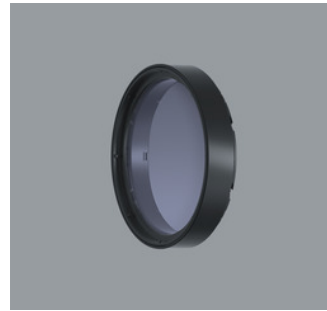


AC006035
 Softening lens
 Filter holder: polymer, black, rotatable through 360°. Replacement without tools.

Accessories



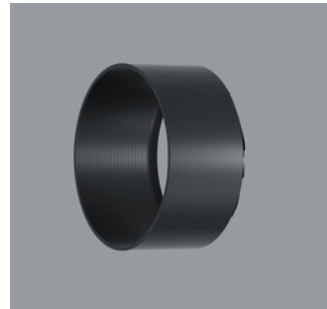
AC006043
Sculpture lens
Filter holder: polymer, black, rotatable through 360°. Replacement without tools.



AC006037
Blue Light Filter
Filter holder: polymer, black, rotatable through 360°. Replacement without tools.



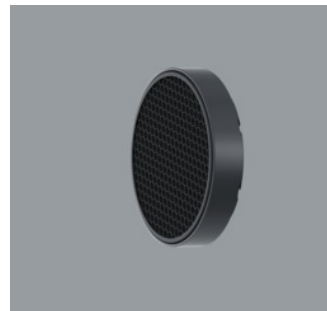
AC006038
Cold Filter
Filter holder: polymer, black, rotatable through 360°. Replacement without tools.



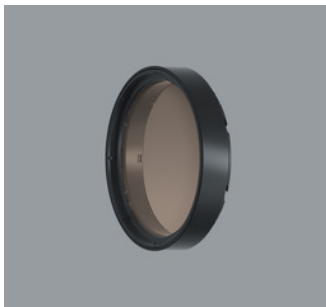
AC001014
Snoot
Polymer, black.



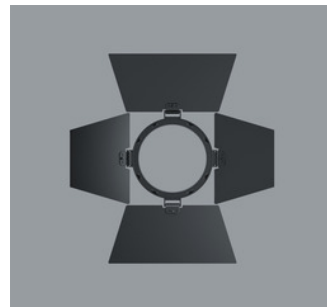
AC006036
Cold Filter Plus
Filter holder: polymer, black, rotatable through 360°. Replacement without tools.



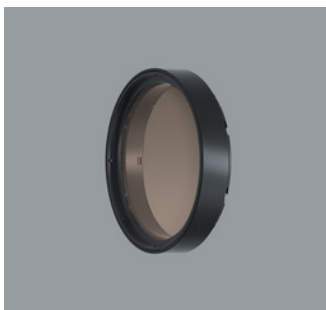
AC004026
Honeycomb anti-glare screen
Aluminium, powder-coated black, polymer outer.



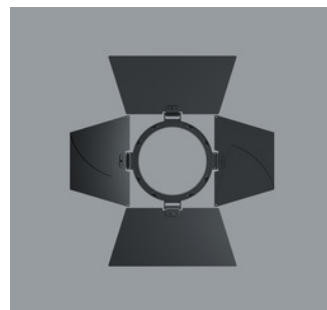
AC006049
Warm Filter
Filter holder: polymer, black, rotatable through 360°. Replacement without tools.



AC005005
Barn doors 4-fold
Aluminium, coated black.



AC006048
Warm Filter Plus
Filter holder: polymer, black, rotatable through 360°. Replacement without tools.



AC005007
Barn doors 8-fold
Aluminium, coated black.



AC006039
Skintone Filter
Filter holder: polymer, black, rotatable through 360°. Replacement without tools.

Accessories

**55249.000**

ERCO Casambi motion detector with light sensor for ERCO 220-240V track.

Setup via Casambi app (Android/iOS) with Bluetooth Low Energy (BLE)-capable mobile devices.

Use for daylight-dependent light control with or without motion detector.

Detection range of infrared (PIR) sensor 100°/ 5m. At 3m room height, this is a circle with diameter of approx. 7m.

3-phase adapter for ERCO 220-240V track: polymer, black.

Black

Weight 0.18kg

