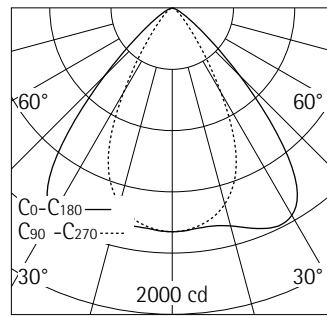


**A1036021** Black  
 LED module: 25.1W 2797lm 3000K  
 warm white  
 Switchable  
 Version 1  
 Size L  
 Spherolit lens oval wide flood

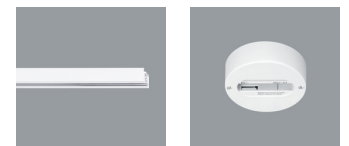
**Product description**  
 Housing: cast aluminium, powder-coated; can be swivelled through 90° on the bracket. Upper cover made of polymer.  
 Bracket: cast aluminium/polymer, coated; can be rotated through 360° on the adapter.  
 3-phase adapter for ERCO 220-240V track: polymer, black.  
 Control gear.  
 Lens unit: polymer, black, rotatable through 360°. Spherolit lens made of optical polymer.  
 LED module: high-power LEDs. Collimating lens made of optical polymer.  
 For ceiling mounting only.  
 Install the luminaire out of people's normal reach.  
 Weight 1.30kg



| h(m) | E(lx) | D(m) |      |
|------|-------|------|------|
|      |       | C0   | C90  |
|      |       | 86°  | 57°  |
| 1    | 1461  | 1.87 | 1.09 |
| 2    | 365   | 3.73 | 2.17 |
| 3    | 162   | 5.60 | 3.26 |
| 4    | 91    | 7.46 | 4.34 |
| 5    | 58    | 9.33 | 5.43 |

**Technical data**

|                                                     |                                 |
|-----------------------------------------------------|---------------------------------|
| Luminous flux of the luminaire                      | 2096lm                          |
| Connected load                                      | 27.5W                           |
| Luminaire efficacy                                  | 76lm/W                          |
| Colour deviation                                    | 1.5 SDCM                        |
| Colour rendition index                              | CRI 92                          |
| Lumen maintenance (LED manufacturer specifications) | L90/B10 ≤50000h<br>L90 ≤100000h |
| LED failure rate                                    | 0.1% ≤50000h                    |
| Dimming range                                       | 1%-100%                         |
| Dimming method                                      | --                              |
| LMF                                                 | E                               |
| Standby power per control gear                      | --                              |
| Luminaires per circuit breaker B16                  | 50                              |



**Mounting**  
 ERCO 3-circuit track  
 Hi-trac 3-circuit track  
 1-circuit singlet

## Planning data

### Melanopic light effect

|                   |              |      |      |
|-------------------|--------------|------|------|
| Art. no.          | Spectrum     | MR   | MDER |
| A1036021 (direct) | 3000K CRI 92 | 0.54 | 0.48 |

MR Melanopic ratio according to DIN SPEC 5031-100-100:2015-08: "amel;v"

MDER Melanopic daylight equivalent ratio according to DIN SPEC 5031-100-100:2015-08: "amel;D65;v"

Multiplying the melanopic ratio MR with the illuminance gives the equivalent melanopic illuminance EML (equivalent melanopic lux). The equivalent illuminance with daylight (D65) is obtained by multiplying the illuminance by the melanopic daylight equivalent ratio MDER.

| Cleaning (a) | 1    |      |      |      | 2    |      |      |      | 3    |      |      |      |
|--------------|------|------|------|------|------|------|------|------|------|------|------|------|
|              | P    | C    | N    | D    | P    | C    | N    | D    | P    | C    | N    | D    |
| LMF          | 0.96 | 0.94 | 0.90 | 0.86 | 0.93 | 0.91 | 0.86 | 0.81 | 0.92 | 0.90 | 0.84 | 0.79 |
| RSMF         | 0.99 | 0.97 | 0.95 | 0.92 | 0.98 | 0.97 | 0.95 | 0.92 | 0.98 | 0.97 | 0.95 | 0.92 |

| Hours of operation (h) | 1000 | 5000 | 10000 | 20000 | 30000 | 40000 | 50000 |
|------------------------|------|------|-------|-------|-------|-------|-------|
| LLMF                   | 1.00 | 0.99 | 0.98  | 0.96  | 0.94  | 0.92  | 0.90  |
| LSF                    | 1    | 1    | 1     | 1     | 1     | 1     | 1     |

|      |                                 |
|------|---------------------------------|
| MF   | LMF x RSMF x LLMF x LSF         |
| MF   | Maintenance Factor              |
| LMF  | Luminaire Maintenance Factor    |
| RSMF | Room Surface Maintenance Factor |
| LLMF | Lamp Lumens Maintenance Factor  |
| LSF  | Lamp Survival Factor            |
| P    | Room pure                       |
| C    | Room clean                      |
| N    | Room normal                     |
| D    | Room dirty                      |

### Data according to regulations

2019/2020/EU supplemented by 2021/341/EU and 2019/2015/EU supplemented by 2021/340/EU Energy Consumption Labelling Ordinance

This product contains a light source of efficiency class E  
 Due to thermal and photometric properties as well as to protect electronic components from ESD (electrostatic discharge) the light source cannot be changed by the customer.

ID EPREL: 985720  
 Model identifier: 3000060580  
 Download data sheets for control gear and disassembly instructions at [www.erco.com/slr](http://www.erco.com/slr)

### Technical data in accordance with international norms and standards

|            |                                                                                 |
|------------|---------------------------------------------------------------------------------|
| IEC 60598  | Luminaires – Part 1+2: general requirements, specific requirements and tests    |
| IEC 62031  | LED modules for general lighting – safety requirements                          |
| IEC 62471  | Photobiological safety of lamps and lamp systems                                |
| EN 13032-4 | Light and lighting – measurement and representation of photometric data         |
| CIE 13     | Method of measuring and specifying colour rendering properties of light sources |

All technical data is subject to industry-standard tolerances.  
 Also see [www.erco.com/erco-led](http://www.erco.com/erco-led)

For explanations of the symbols and abbreviations used and other general information, see [www.erco.com/symbols](http://www.erco.com/symbols)

## Accessories



**AC002176**  
 Lens unit spot  
 Polymer, black, rotatable through 360°. Replacement without tools.  
 Spherolit lens made of optical polymer.



**AC002166**  
 Lens unit wallwash  
 Polymer, black, rotatable through 360°. Replacement without tools.  
 Anti-reflective Spherolit lens made of optical polymer.



**AC002169**  
 Lens unit flood  
 Polymer, black, rotatable through 360°. Replacement without tools.  
 Spherolit lens made of optical polymer.



**AC002179**  
 Lens unit zoom spot  
 Polymer, black, rotatable through 360°. Replacement without tools.  
 Anti-reflective zoom lens made of optical polymer, infinitely variable focus.



**AC002167**  
 Lens unit wide flood  
 Polymer, black, rotatable through 360°. Replacement without tools.  
 Spherolit lens made of optical polymer.



**AC002178**  
 Lens unit zoom oval  
 Polymer, black, rotatable through 360°. Replacement without tools.  
 Anti-reflective zoom lens made of optical polymer, infinitely variable focus.



**AC002164**  
 Lens unit extra wide flood  
 Polymer, black, rotatable through 360°. Replacement without tools.  
 Spherolit lens made of optical polymer.



**AC002255**  
 Lens unit narrow framing  
 Aluminium/polymer, coated black, pivotable through 360°. Replacement without tools.  
 Projection lens, continuously focusable. Ideal for long projection distances.  
 Framing attachment: stainless steel, black.  
 Aperture.



**AC002165**  
 Lens unit oval flood  
 Polymer, black, rotatable through 360°. Replacement without tools.  
 Anti-reflective Spherolit lens made of optical polymer.



**AC002264**  
 Lens unit wide framing  
 Aluminium/polymer, coated black, pivotable through 360°. Replacement without tools.  
 2 projection lenses, continuously focusable. Ideal for short projection distances.  
 Framing attachment: stainless steel, black.  
 Aperture.

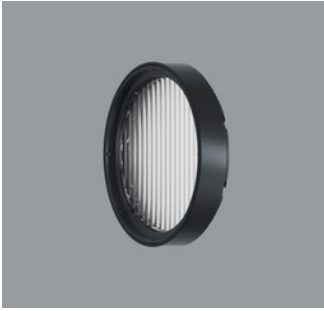


**AC002168**  
 Lens unit oval wide flood  
 Polymer, black, rotatable through 360°. Replacement without tools.  
 Anti-reflective Spherolit lens made of optical polymer.

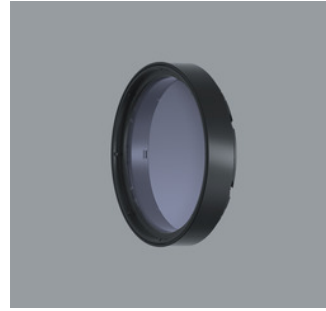


**AC006035**  
 Softening lens  
 Filter holder: polymer, black, rotatable through 360°. Replacement without tools.

## Accessories



**AC006043**  
Sculpture lens  
Filter holder: polymer, black, rotatable through 360°. Replacement without tools.



**AC006037**  
Blue Light Filter  
Filter holder: polymer, black, rotatable through 360°. Replacement without tools.



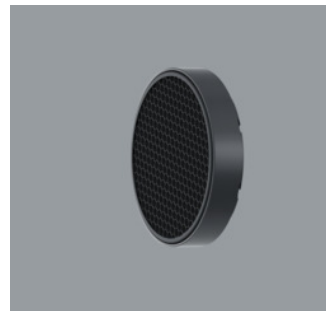
**AC006038**  
Cold Filter  
Filter holder: polymer, black, rotatable through 360°. Replacement without tools.



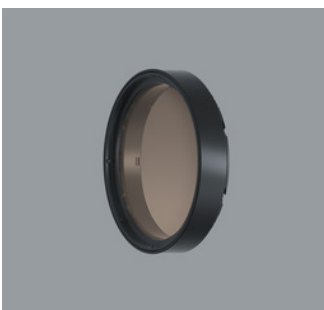
**AC001014**  
Snoot  
Polymer, black.



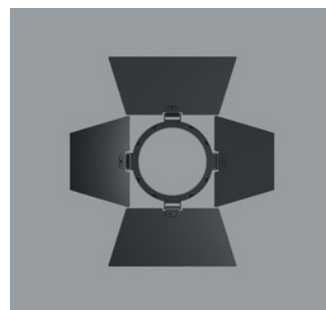
**AC006036**  
Cold Filter Plus  
Filter holder: polymer, black, rotatable through 360°. Replacement without tools.



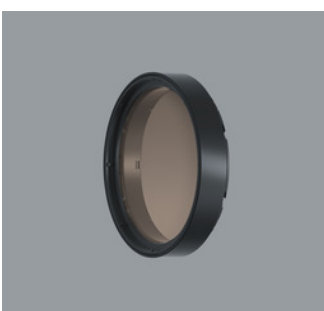
**AC004026**  
Honeycomb anti-glare screen  
Aluminium, powder-coated black, polymer outer.



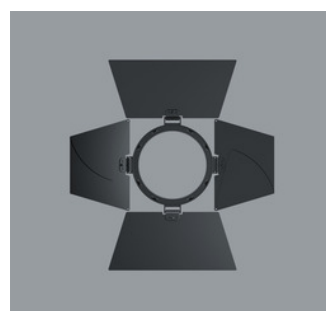
**AC006049**  
Warm Filter  
Filter holder: polymer, black, rotatable through 360°. Replacement without tools.



**AC005005**  
Barn doors 4-fold  
Aluminium, coated black.



**AC006048**  
Warm Filter Plus  
Filter holder: polymer, black, rotatable through 360°. Replacement without tools.



**AC005007**  
Barn doors 8-fold  
Aluminium, coated black.



**AC006039**  
Skintone Filter  
Filter holder: polymer, black, rotatable through 360°. Replacement without tools.