



Compar – The flexible path to perfect light

An adaptable, compact tool for ergonomic light in offices

Illuminating office architecture and workplaces in a nuanced and extremely flexible way – made possible by the combination of Compar luminaires and track as the infrastructure. As downlights for track, they utilise the lighting technology of the Compar range. With their flat housing they are also suitable for rooms with low ceiling heights. With its anti-glare louvre Compar offers a high level of visual comfort, and workplaces are illuminated according to standards with the appropriate light distributions.

Compar can always be optimally aligned even with changing office layouts due to installation via track adapters. The wattage and light distribution of Compar enable wide luminaire spacing for economical lighting concepts.



Structure and characteristics

The features described here are typical of products in this range. Special versions may offer additional or varying features. A comprehensive description of the features of individual products can be found on our website.

1 ERCO lens system

- Made of optical polymer
- Light distributions: wide flood, extra wide flood, oval wide flood or oval flood

or

Reflector (lens wallwasher)

- Polymer, silver vaporised, mirror-finish
- Softec lens

2 ERCO LED-module

- High-power LED: warm white (2700K or 3000K) or neutral white (3500K or 4000K)

3 Louvre

- Polymer, black lacquered or aluminium vaporised, silver, mirror-finish
- Downlight: cut-off angle 30°
- Wallwasher: cut-off angle 70°

4 Housing

- White (RAL9002), black or silver
- Cast aluminium, powder-coated
- Rotatable through 360° on adapter

5 Control gear

- Switchable, phase dimmable+On-board Dim, DALI dimmable or Casambi Bluetooth
- Phase dimmable + On-board Dim version: Dimming with external dimmers (trailing edge) possible and rotary control for brightness control on the luminaire

6 ERCO 3-circuit adapter or ERCO DALI adapter

Variants on request

- Anti-dazzle louvre: coated matt gold, matt silver or matt champagne
- Housing: 10,000 further colours

Please contact your ERCO consultant.



Design and application:
www.erco.com/compar-t

Compar for track 220-240V



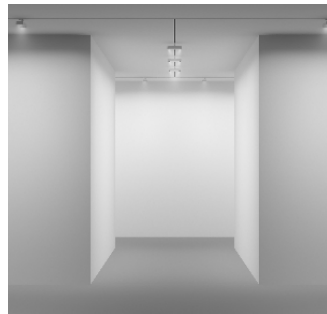
Louvres for efficient visual comfort

A louvre is designed to restrict the view into the luminaire, achieving efficient visual comfort with an emission angle of 90°. An anti-glare louvre available in black or silver enables the luminaire to blend with the material and colour of the ceiling.



Suitable for office workstations

ERCO develops luminaires with the specifications of good glare control and high visual comfort. UGR values are used as support for purely norm-referenced lighting. With downlights though this should not be carried out using 'blanket' values, but should be implemented according to the individual arrangement of luminaires in the room.



Double wallwasher

The special light distribution of the double wallwashers efficiently illuminates the opposite walls of corridors. The diffuse, reflected light from the walls also illuminates the floor and ceiling.



Small luminaire dimensions

Small luminaires are discreet and place the focus on the light itself. Compact luminaire dimensions are particularly advantageous with small rooms.

Special characteristics



Excellent visual comfort



For office workstation lighting from UGR 7.1



Double wallwasher



Small luminaire dimensions



ERCO high-power LEDs



Efficient lens system



Cut-off 30°/70°



Different light colours



Excellent thermal management



EMC-optimised



Various housing colours



Easy installation



Switchable



Phase dimmable + On-board Dim



DALI dimmable

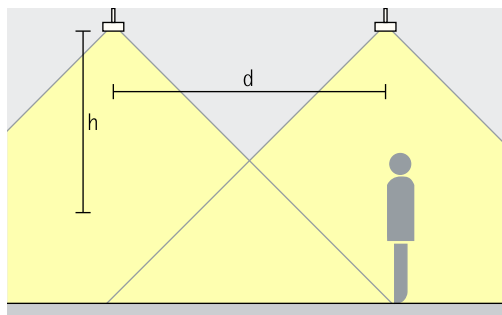


Casambi Bluetooth

Compar for track 220-240V – Luminaire arrangement

Downlights

Wide flood, Extra wide flood



General lighting

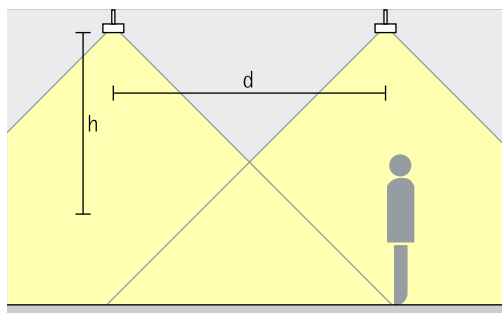
As an approximate luminaire distance (d) between two luminaires, the height (h) of the luminaire above the working plane can be used. The intersecting beams produce excellent uniformity. The recommended offset from the wall is half the luminaire spacing.

Rough guide: $d \leq 1.5 \times h$

Application area: as ambient lighting in the room and as flexible illumination of office workplaces.

Downlights oval wide flood

Oval wide flood



General lighting

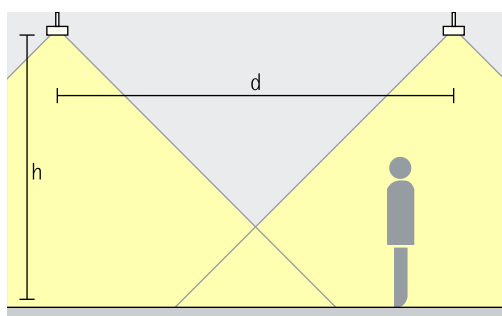
To achieve a high level of uniformity and good facial recognition when illuminating office workstations, up to 1.5 times the height (h) of the luminaire above the working plane can be used for the spacing (d) between two luminaires. The intersecting beams produce excellent uniformity. The recommended offset from the wall is half the luminaire spacing.

Rough guide: $d \leq 1.5 \times h$

Application area: flexible lighting for office workplaces.

Downlights oval flood

Oval flood



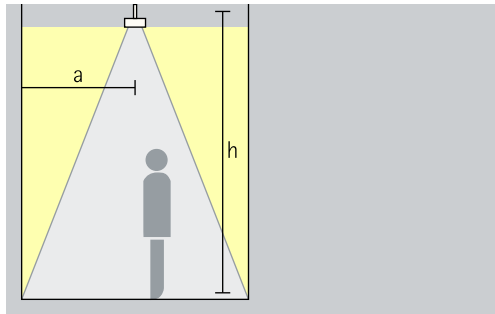
Linear lighting

Mounted in a row, the oval beams generate linear illumination, for example for circulation areas in the office or for hallways. As an approximate luminaire distance (d) between two luminaires, 1.5 times the height (h) of the luminaire above the working plane can be used.

Rough guide: $d \leq 1.5 \times h$

Compar for track 220-240V – Luminaire arrangement

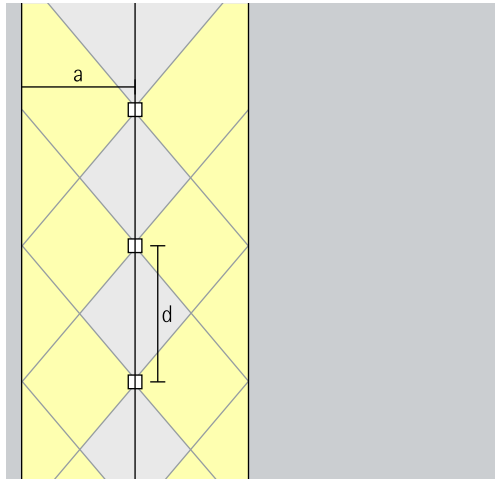
Double wallwashers
Double wallwash



Wallwashing

For the uniform vertical lighting of opposite walls, the distance to the wall (a) on both sides with Compar double wallwashers should be around one third of the room height (h). The luminaires should always be positioned on the central axis between the walls.

Arrangement: $a = 1/3 \times h$



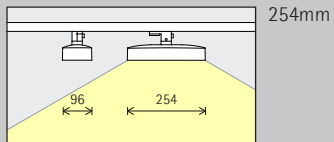
For good longitudinal uniformity, the spacing (d) of Compar lens wallwashers may be up to 1.3 times the offset from the wall (a).

Arrangement: $d \leq 1.3 \times a$

Optimal wall distances and luminaire spacing values for individual products are specified in the wall-washer tables at erco.com and on the product data sheets.

Compar for track 220-240V

Construction size



LED module
Maximum value
at 4000K CRI 82

12W/1650lm
19W/2460lm

Light colour

	2700K CRI 92		3500K CRI 92
	3000K CRI 92		4000K CRI 82
	3000K CRI 97		4000K CRI 92

Light distribution

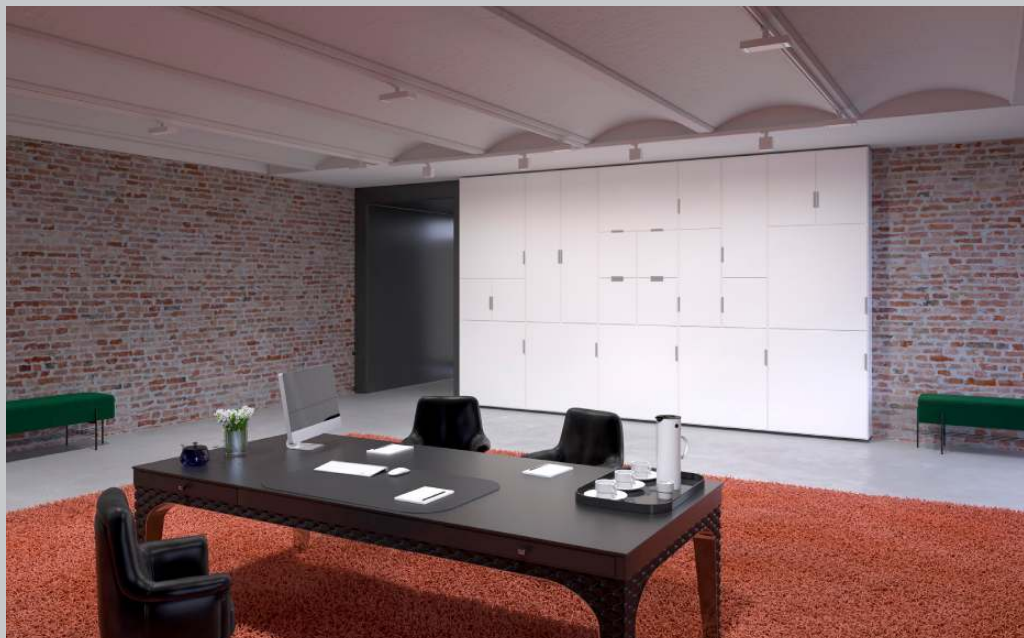
Downlights	Downlights oval flood
Wide flood	Oval flood
Extra wide flood	Double wallwashers
Downlights oval wide flood	Double wallwash
Oval wide flood	

Control

Switchable	DALI
Phase dimmable + On-board Dim	Casambi Bluetooth

Colour (housing/louvre)

	White/Silver		White/Black		10,000 colours */ Silver
	Black/Silver		Black/Black		10,000 colours */ Black
	Silver/Silver		Silver/Black		



* available on request

Article numbers and planning data:
www.erco.com/017602

Design and application:
www.erco.com/compar-t



